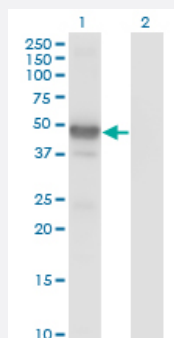


# LHX2 monoclonal antibody (M02), clone 1E6

Catalog # H00009355-M02

Size 100 ug

## Applications

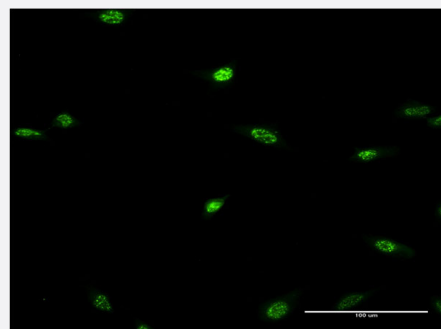


### Western Blot (Transfected lysate)

Western Blot analysis of LHX2 expression in transfected 293T cell line by LHX2 monoclonal antibody (M02), clone 1E6.

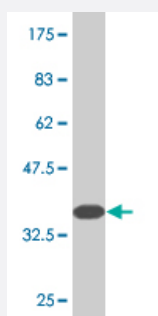
Lane 1: LHX2 transfected lysate(44.4 KDa).

Lane 2: Non-transfected lysate.



### Immunofluorescence

Immunofluorescence of monoclonal antibody to LHX2 on HeLa cell . [antibody concentration 10 ug/ml]



Western Blot detection against Immunogen (34.1 KDa) .

## Specification

### Product Description

Mouse monoclonal antibody raised against a partial recombinant LHX2.

<b>Immunogen</b>	LHX2 (NP_004780, 1 a.a. ~ 76 a.a) partial recombinant protein with GST tag. MW of the GST tag alone is 26 KDa.
<b>Sequence</b>	MLFHSLSGPEVHGVIDEMDRRAKSEAPAISSAIDRGDTETTMPSISSDRAALCAGCGGKISDRYYL LAVDKQWHMR
<b>Host</b>	Mouse
<b>Reactivity</b>	Human
<b>Interspecies Antigen Sequence</b>	Mouse (99); Rat (99)
<b>Isotype</b>	IgG2a Kappa
<b>Quality Control Testing</b>	Antibody Reactive Against Recombinant Protein. Western Blot detection against Immunogen (34.1 KDa) .
<b>Storage Buffer</b>	In 1x PBS, pH 7.4
<b>Storage Instruction</b>	Store at -20°C or lower. Aliquot to avoid repeated freezing and thawing.

## Applications

- Western Blot (Transfected lysate)

Western Blot analysis of LHX2 expression in transfected 293T cell line by LHX2 monoclonal antibody (M02), clone 1E6.

Lane 1: LHX2 transfected lysate(44.4 KDa).

Lane 2: Non-transfected lysate.

[Protocol Download](#)

- Western Blot (Recombinant protein)

[Protocol Download](#)

- ELISA

- Immunofluorescence

Immunofluorescence of monoclonal antibody to LHX2 on HeLa cell . [antibody concentration 10 ug/ml]

## Gene Info — LHX2

Entrez GeneID

[9355](#)

GeneBank Accession#	<a href="#">NM_004789</a>
Protein Accession#	<a href="#">NP_004780</a>
Gene Name	LHX2
Gene Alias	LH2, MGC138390, hLhx2
Gene Description	LIM homeobox 2
Omim ID	<a href="#">603759</a>
Gene Ontology	<a href="#">Hyperlink</a>
Gene Summary	This gene encodes a protein belonging to a large protein family, members of which carry the LIM domain, a unique cysteine-rich zinc-binding domain. The encoded protein may function as a transcriptional regulator. The protein can recapitulate or rescue phenotypes in Drosophila caused by a related protein, suggesting conservation of function during evolution. [provided by RefSeq
Other Designations	LIM HOX gene 2 LIM homeobox protein 2 OTTHUMP00000022092