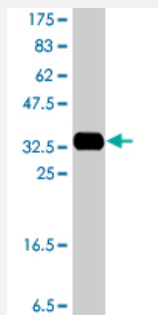


# LHX2 polyclonal antibody (A01)

Catalog # H00009355-A01

Size 50 uL

## Applications



Western Blot detection against Immunogen (34.47 KDa) .

## Specification

<b>Product Description</b>	Mouse polyclonal antibody raised against a partial recombinant LHX2.
<b>Immunogen</b>	LHX2 (NP_004780, 1 a.a. ~ 76 a.a) partial recombinant protein with GST tag.
<b>Sequence</b>	MLFHSLSGPEVHGVIDEMDRRAKSEAPAISSAIDRGDTETTMPSISSDRAALCAGCGGKISDRYYL LAVDKQWHMR
<b>Host</b>	Mouse
<b>Reactivity</b>	Human
<b>Interspecies Antigen Sequence</b>	Mouse (99); Rat (99)
<b>Quality Control Testing</b>	Antibody Reactive Against Recombinant Protein. Western Blot detection against Immunogen (34.47 KDa) .
<b>Storage Buffer</b>	50 % glycerol
<b>Storage Instruction</b>	Store at -20°C or lower. Aliquot to avoid repeated freezing and thawing.

## Applications

- Western Blot (Recombinant protein)

[Protocol Download](#)

- ELISA

## Gene Info — LHX2

Entrez GeneID	<a href="#">9355</a>
---------------	----------------------

GeneBank Accession#	<a href="#">NM_004789</a>
---------------------	---------------------------

Protein Accession#	<a href="#">NP_004780</a>
--------------------	---------------------------

Gene Name	LHX2
-----------	------

Gene Alias	LH2, MGC138390, hLhx2
------------	-----------------------

Gene Description	LIM homeobox 2
------------------	----------------

Omim ID	<a href="#">603759</a>
---------	------------------------

Gene Ontology	<a href="#">Hyperlink</a>
---------------	---------------------------

Gene Summary	This gene encodes a protein belonging to a large protein family, members of which carry the LIM domain, a unique cysteine-rich zinc-binding domain. The encoded protein may function as a transcriptional regulator. The protein can recapitulate or rescue phenotypes in Drosophila caused by a related protein, suggesting conservation of function during evolution. [provided by RefSeq]
--------------	--

Other Designations	LIM HOX gene 2 LIM homeobox protein 2 OTTHUMP00000022092
--------------------	--