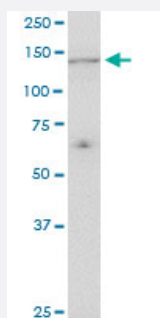


UBE4A monoclonal antibody (M08), clone 1G8

Catalog # H00009354-M08

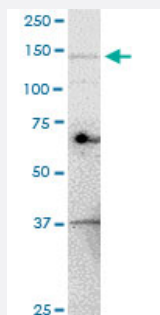
Size 100 ug

Applications



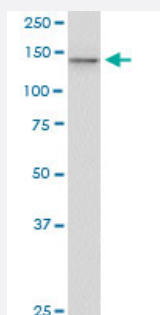
Western Blot (Cell lysate)

UBE4A monoclonal antibody (M08), clone 1G8. Western Blot analysis of UBE4A expression in PC-12.



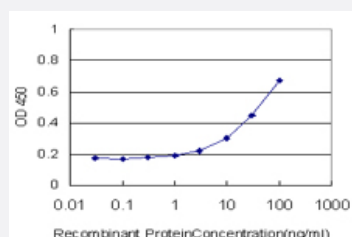
Western Blot (Cell lysate)

UBE4A monoclonal antibody (M08), clone 1G8. Western Blot analysis of UBE4A expression in NIH/3T3.



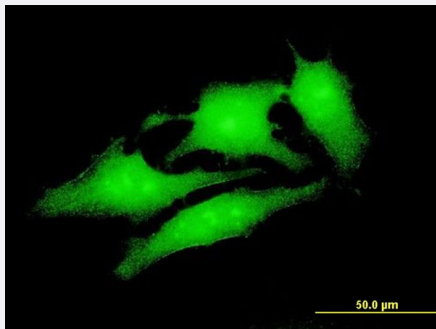
Western Blot (Cell lysate)

UBE4A monoclonal antibody (M08), clone 1G8. Western Blot analysis of UBE4A expression in K-562.



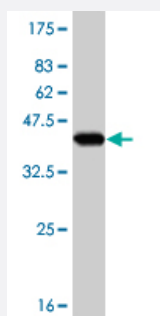
Sandwich ELISA (Recombinant protein)

Detection limit for recombinant GST tagged UBE4A is approximately 3ng/ml as a capture antibody.



Immunofluorescence

Immunofluorescence of monoclonal antibody to UBE4A on HeLa cell . [antibody concentration 10 ug/ml]



Western Blot detection against Immunogen (36.63 KDa) .

Specification

Product Description	Mouse monoclonal antibody raised against a partial recombinant UBE4A.
Immunogen	UBE4A (NP_004779, 974 a.a. ~ 1073 a.a) partial recombinant protein with GST tag. MW of the GST tag alone is 26 KDa.
Sequence	LAERIKSLADLQQQEEETYADACDEFLDPIMSTLMCDPVVLPSSRVTVDRSTIARHLLSDQTDPFN RSPLTMDQIRPNTELKEKIQRWLAERKQQKEQLE
Host	Mouse
Reactivity	Human, Mouse, Rat
Interspecies Antigen Sequence	Mouse (98); Rat (98)
Isotype	IgG2a Kappa
Quality Control Testing	Antibody Reactive Against Recombinant Protein. Western Blot detection against Immunogen (36.63 KDa) .
Storage Buffer	In 1x PBS, pH 7.4
Storage Instruction	Store at -20°C or lower. Aliquot to avoid repeated freezing and thawing.

Applications

- Western Blot (Cell lysate)

UBE4A monoclonal antibody (M08), clone 1G8. Western Blot analysis of UBE4A expression in PC-12.

[Protocol Download](#)

- Western Blot (Cell lysate)

UBE4A monoclonal antibody (M08), clone 1G8. Western Blot analysis of UBE4A expression in NIH/3T3.

[Protocol Download](#)

- Western Blot (Cell lysate)

UBE4A monoclonal antibody (M08), clone 1G8. Western Blot analysis of UBE4A expression in K-562.

[Protocol Download](#)

- Western Blot (Recombinant protein)

[Protocol Download](#)

- Sandwich ELISA (Recombinant protein)

Detection limit for recombinant GST tagged UBE4A is approximately 3ng/ml as a capture antibody.

[Protocol Download](#)

- ELISA

- Immunofluorescence

Immunofluorescence of monoclonal antibody to UBE4A on HeLa cell . [antibody concentration 10 ug/ml]

Gene Info — UBE4A

Entrez GeneID	9354
---------------	----------------------

GeneBank Accession#	NM_004788
---------------------	---------------------------

Protein Accession#	NP_004779
--------------------	---------------------------

Gene Name	UBE4A
-----------	-------

Gene Alias	E4, KIAA0126, MGC133315, UBOX2, UFD2
------------	--------------------------------------

Gene Description	ubiquitination factor E4A (UFD2 homolog, yeast)
Omim ID	603753
Gene Ontology	Hyperlink
Gene Summary	The modification of proteins with ubiquitin is an important cellular mechanism for targeting abnormal or short-lived proteins for degradation. Ubiquitination involves at least three classes of enzymes: ubiquitin-activating enzymes, or E1s, ubiquitin-conjugating enzymes, or E2s, and ubiquitin-protein ligases, or E3s. This gene encodes an additional conjugation factor, E4, which is involved in multiubiquitin chain assembly. [provided by RefSeq]
Other Designations	homologous to yeast UFD2 ubiquitin conjugation factor E4 A ubiquitination factor E4A ubiquitination factor E4A (homologous to yeast UFD2)

Pathway

- [Ubiquitin mediated proteolysis](#)