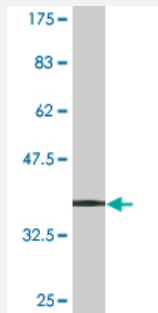


RPL23 monoclonal antibody (M01), clone 2F12

Catalog # H00009349-M01

Size 100 ug

Applications



Western Blot detection against Immunogen (34.21 KDa) .

Specification

Product Description	Mouse monoclonal antibody raised against a full-length recombinant RPL23.
Immunogen	RPL23 (AAH34378, 1 a.a. ~ 77 a.a) full-length recombinant protein with GST tag. MW of the GST tag alone is 26 KDa.
Sequence	MSKRGRGGSSGAKFRISLGLPVGAVINCADNTGAKNLYISVKGIGRLNRLPAAGVGDMVMATVK KGKPELRKKGE
Host	Mouse
Reactivity	Human
Isotype	IgG2b Kappa
Quality Control Testing	Antibody Reactive Against Recombinant Protein. Western Blot detection against Immunogen (34.21 KDa) .
Storage Buffer	In 1x PBS, pH 7.4
Storage Instruction	Store at -20°C or lower. Aliquot to avoid repeated freezing and thawing.

Applications

- Western Blot (Recombinant protein)

[Protocol Download](#)

- ELISA

Gene Info — RPL23

Entrez GeneID [9349](#)

GeneBank Accession# [BC034378](#)

Protein Accession# [AAH34378](#)

Gene Name RPL23

Gene Alias MGC111167, MGC117346, MGC72008, rpL17

Gene Description ribosomal protein L23

Omim ID [603662](#)

Gene Ontology [Hyperlink](#)

Gene Summary Ribosomes, the organelles that catalyze protein synthesis, consist of a small 40S subunit and a large 60S subunit. Together these subunits are composed of 4 RNA species and approximately 80 structurally distinct proteins. This gene encodes a ribosomal protein that is a component of the 60 S subunit. The protein belongs to the L14P family of ribosomal proteins. It is located in the cytoplasm. This gene has been referred to as rpL17 because the encoded protein shares amino acid identity with ribosomal protein L17 from *Saccharomyces cerevisiae*; however, its official symbol is RPL23. As is typical for genes encoding ribosomal proteins, there are multiple processed pseudogenes of this gene dispersed through the genome. [provided by RefSeq]

Other Designations 60S ribosomal protein L23|OTTHUMP00000164153

Pathway

- [Ribosome](#)