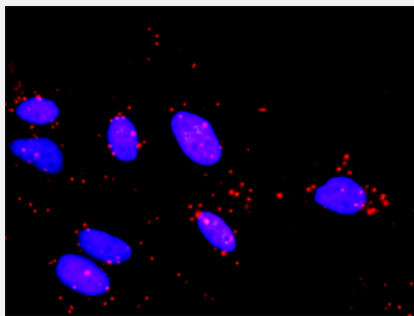


# TAOK2 monoclonal antibody (M11), clone 2F4

Catalog # H00009344-M11

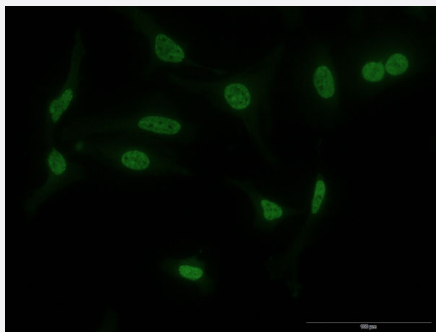
Size 100 ug

## Applications



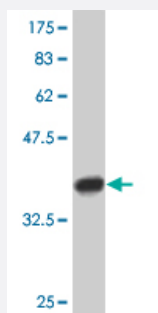
### *In situ Proximity Ligation Assay (Cell)*

Proximity Ligation Analysis of protein-protein interactions between MAP2K3 and TAOK2. HeLa cells were stained with anti-MAP2K3 rabbit purified polyclonal 1:1200 and anti-TAOK2 mouse monoclonal antibody 1:50. Each red dot represents the detection of protein-protein interaction complex, and nuclei were counterstained with DAPI (blue).



### Immunofluorescence

Immunofluorescence of monoclonal antibody to TAOK2 on HeLa cell . [antibody concentration 10 ug/ml]



Western Blot detection against Immunogen (36.74 KDa) .

## Specification

### Product Description

Mouse monoclonal antibody raised against a partial recombinant TAOK2.

Immunogen	TAOK2 (AAH51798, 831 a.a. ~ 930 a.a) partial recombinant protein with GST tag. MW of the GST tag alone is 26 KDa.
Sequence	ELQCRQYKRKMLLARHSLDQDLLREDLNKKQTQKDLECALLLRQHEATRELELRQLQAVQRTRA ELTRLQHQTTELGNQLEYNKRREQELRQKHAAQVRQQ
Host	Mouse
Reactivity	Human
Interspecies Antigen Sequence	Mouse (100)
Isotype	IgG2a Kappa
Quality Control Testing	Antibody Reactive Against Recombinant Protein. Western Blot detection against Immunogen (36.74 KDa) .
Storage Buffer	In 1x PBS, pH 7.4
Storage Instruction	Store at -20°C or lower. Aliquot to avoid repeated freezing and thawing.

## Applications

- Western Blot (Recombinant protein)

[Protocol Download](#)

- ELISA

- In situ* Proximity Ligation Assay (Cell)

Proximity Ligation Analysis of protein-protein interactions between MAP2K3 and TAOK2. HeLa cells were stained with anti-MAP2K3 rabbit purified polyclonal 1:1200 and anti-TAOK2 mouse monoclonal antibody 1:50. Each red dot represents the detection of protein-protein interaction complex, and nuclei were counterstained with DAPI (blue).

- Immunofluorescence

Immunofluorescence of monoclonal antibody to TAOK2 on HeLa cell . [antibody concentration 10 ug/ml]

## Gene Info — TAOK2

Entrez GeneID [9344](#)

GeneBank Accession# [BC051798](#)

Protein Accession#	<a href="#">AAH51798</a>
Gene Name	TAOK2
Gene Alias	KIAA0881, MAP3K17, PSK, PSK1, TAO1, TAO2
Gene Description	TAO kinase 2
Gene Ontology	<a href="#">Hyperlink</a>
Other Designations	prostate derived STE20-like kinase PSK thousand and one amino acid protein kinase

## Pathway

- [MAPK signaling pathway](#)

## Disease

- [Autistic Disorder](#)
- [Genetic Predisposition to Disease](#)