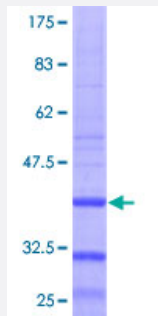


B4GALT6 (Human) Recombinant Protein (Q01)

Catalog # H00009331-Q01

Size 25 ug, 10 ug

Applications



Specification

| | |
|--------------------------------------|--|
| Product Description | Human B4GALT6 partial ORF (NP_004766.1, 48 a.a. - 145 a.a.) recombinant protein with GST-tag at N-terminal. |
| Sequence | ARGIMLRENVKTIGHMIRLYTNKNSTLNGTDYPEGNNSSDYLVQTTTYLPENFTYSPYLPCEKLPY MRGFLNVNVSEVSFDEIHQLFSKDLIDIEPGG |
| Host | Wheat Germ (in vitro) |
| Theoretical MW (kDa) | 36.52 |
| Interspecies Antigen Sequence | Mouse (84); Rat (84) |
| Preparation Method | in vitro wheat germ expression system |
| Purification | Glutathione Sepharose 4 Fast Flow |
| Quality Control Testing | 12.5% SDS-PAGE Stained with Coomassie Blue. |
| Storage Buffer | 50 mM Tris-HCl, 10 mM reduced Glutathione, pH=8.0 in the elution buffer. |
| Storage Instruction | Store at -80°C. Aliquot to avoid repeated freezing and thawing. |
| Note | Best use within three months from the date of receipt of this protein. |

Applications

- Enzyme-linked Immunoabsorbent Assay
- Western Blot (Recombinant protein)
- Antibody Production
- Protein Array

Gene Info — B4GALT6

Entrez GeneID [9331](#)

GeneBank Accession# [NM_004775](#)

Protein Accession# [NP_004766.1](#)

Gene Name B4GALT6

Gene Alias B4Gal-T6, beta4Gal-T6

Gene Description UDP-Gal:betaGlcNAc beta 1,4- galactosyltransferase, polypeptide 6

Omim ID [604017](#)

Gene Ontology [Hyperlink](#)

Gene Summary This gene is one of seven beta-1,4-galactosyltransferase (beta4GalT) genes. They encode type II membrane-bound glycoproteins that appear to have exclusive specificity for the donor substrate UDP-galactose; all transfer galactose in a beta1,4 linkage to similar acceptor sugars: GlcNAc, Glc, and Xyl. Each beta4GalT has a distinct function in the biosynthesis of different glycoconjugates and saccharide structures. As type II membrane proteins, they have an N-terminal hydrophobic signal sequence that directs the protein to the Golgi apparatus and which then remains uncleaved to function as a transmembrane anchor. By sequence similarity, the beta4GalTs form four groups: beta4GalT1 and beta4GalT2, beta4GalT3 and beta4GalT4, beta4GalT5 and beta4GalT6, and beta4GalT7. The enzyme encoded by this gene is a lactosylceramide synthase important for glycolipid biosynthesis. [provided by RefSeq]

Other Designations UDP-Gal:glucosylceramide beta-1,4-galactosyltransferase|beta-1,4-galactosyltransferase 6|beta4GalT-VI

Pathway

- [Metabolic pathways](#)
- [Sphingolipid metabolism](#)