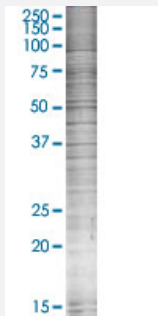


SOCS6 293T Cell Transient Overexpression Lysate(Denatured)

Catalog # H00009306-T02

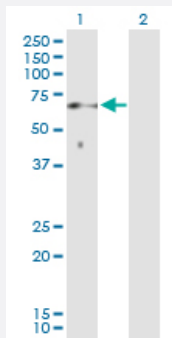
Size 100 uL

Applications



SDS-PAGE Gel

SOCS6 transfected lysate.



Western Blot

Lane 1: SOCS6 transfected lysate (59.5 KDa)

Lane 2: Non-transfected lysate.

Specification

Transfected Cell Line	293T
Plasmid	pCMV-SOCS6 full-length
Host	Human
Theoretical MW (kDa)	59.5
Interspecies Antigen Sequence	Mouse (84); Rat (81)

Quality Control Testing

Transient overexpression cell lysate was tested with Anti-SOCS6 antibody ([H00009306-D01P](#)) by Western Blots.
SDS-PAGE Gel
SOCS6 transfected lysate.
Western Blot
Lane 1: SOCS6 transfected lysate (59.5 KDa)
Lane 2: Non-transfected lysate.

Storage Buffer

1X Sample Buffer (50 mM Tris-HCl, 2% SDS, 10% glycerol, 300 mM 2-mercaptoethanol, 0.01% Bromophenol blue)

Storage Instruction

Store at -80°C. Aliquot to avoid repeated freezing and thawing.

Applications

- Western Blot

Gene Info — SOCS6

Entrez GeneID[9306](#)**GeneBank Accession#**[NM_004232](#)**Protein Accession#**[NP_004223.2](#)**Gene Name**

SOCS6

Gene Alias

CIS4, HSPC060, SOCS4, SSI4, STA4, STAT4

Gene Description

suppressor of cytokine signaling 6

Omim ID[605118](#)**Gene Ontology**[Hyperlink](#)**Gene Summary**

The protein encoded by this gene contains a SH2 domain and a CIS homolog domain. The protein thus belongs to the cytokine-induced STAT inhibitor (CIS), also known as suppressor of cytokine signaling (SOCS) or STAT-induced STAT inhibitor (SSI), protein family. CIS family members are known to be cytokine-inducible negative regulators of cytokine signaling. The expression of this gene can be induced by GM-CSF and EPO in hematopoietic cells. A high expression level of this gene was found in factor-independent chronic myelogenous leukemia (CML) and erythroleukemia (HEL) cell lines. [provided by RefSeq]

Other Designations

STAT induced STAT inhibitor-4|cytokine-inducible SH2 protein 4|suppressor of cytokine signaling 4

Disease

- [Cardiovascular Diseases](#)
- [Diabetes Mellitus](#)
- [Edema](#)
- [Tobacco Use Disorder](#)