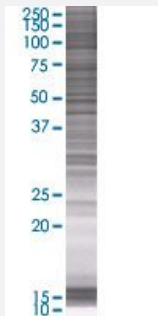


BCL7B 293T Cell Transient Overexpression Lysate(Denatured)

Catalog # H00009275-T01

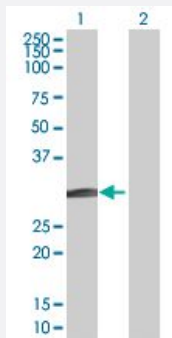
Size 100 uL

Applications



SDS-PAGE Gel

BCL7B transfected lysate.



Western Blot

Lane 1: BCL7B transfected lysate (22.33 KDa)

Lane 2: Non-transfected lysate.

Specification

Transfected Cell Line	293T
Plasmid	pCMV-BCL7B full-length
Host	Human
Theoretical MW (kDa)	22.33
Interspecies Antigen Sequence	Mouse (96)

Quality Control Testing

Transient overexpression cell lysate was tested with Anti-BCL7B antibody ([H00009275-B01](#)) by Western Blots.
SDS-PAGE Gel
BCL7B transfected lysate.
Western Blot
Lane 1: BCL7B transfected lysate (22.33 KDa)
Lane 2: Non-transfected lysate.

Storage Buffer

1X Sample Buffer (50 mM Tris-HCl, 2% SDS, 10% glycerol, 300 mM 2-mercaptoethanol, 0.01% Bromophenol blue)

Storage Instruction

Store at -80°C. Aliquot to avoid repeated freezing and thawing.

Applications

- Western Blot

Gene Info — BCL7B

Entrez GeneID

[9275](#)

GeneBank Accession#

[NM_001707.2](#)

Protein Accession#

[NP_001698.2](#)

Gene Name

BCL7B

Gene Alias

-

Gene Description

B-cell CLL/lymphoma 7B

Omim ID

[605846](#)

Gene Ontology

[Hyperlink](#)

Gene Summary

The protein encoded by this gene contains a region that is highly similar to the N-terminal segment of BCL7A protein. The BCL7A protein is encoded by the gene known to be directly involved in a three-way gene translocation in a Burkitt lymphoma cell line. This gene is located at a chromosomal region commonly deleted in Williams syndrome. The function of this gene has not yet been determined. [provided by RefSeq]

Other Designations

OTTHUMP00000025030

Disease

- [Diabetes Mellitus](#)
- [Genetic Predisposition to Disease](#)