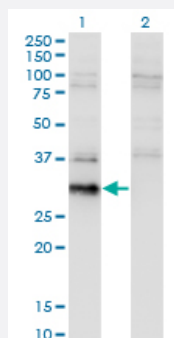


# BCL7B monoclonal antibody (M02), clone 4G1

Catalog # H00009275-M02

Size 100 ug

## Applications

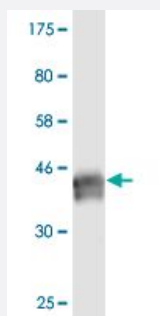


### Western Blot (Transfected lysate)

Western Blot analysis of BCL7B expression in transfected 293T cell line by BCL7B monoclonal antibody (M02), clone 4G1.

Lane 1: BCL7B transfected lysate(22.2 KDa).

Lane 2: Non-transfected lysate.



Western Blot detection against Immunogen (34.43 KDa) .

## Specification

<b>Product Description</b>	Mouse monoclonal antibody raised against a partial recombinant BCL7B.
<b>Immunogen</b>	BCL7B (NP_001698, 124 a.a. ~ 202 a.a) partial recombinant protein with GST tag. MW of the GST tag alone is 26 KDa.
<b>Sequence</b>	AHTSDFRTDDSQPPTLGQEILEEPSLPSSSEVADEPPTLTKEEPVPLETQVVEEEEDSGAPPLKRF CVDQPTVPQTASES
<b>Host</b>	Mouse
<b>Reactivity</b>	Human

Interspecies Antigen Sequence	Mouse (96)
Isotype	IgG2a Kappa
Quality Control Testing	Antibody Reactive Against Recombinant Protein. Western Blot detection against Immunogen (34.43 KDa) .
Storage Buffer	In 1x PBS, pH 7.4
Storage Instruction	Store at -20°C or lower. Aliquot to avoid repeated freezing and thawing.

## Applications

- Western Blot (Transfected lysate)

Western Blot analysis of BCL7B expression in transfected 293T cell line by BCL7B monoclonal antibody (M02), clone 4G1.

Lane 1: BCL7B transfected lysate(22.2 KDa).

Lane 2: Non-transfected lysate.

[Protocol Download](#)

- Western Blot (Recombinant protein)

[Protocol Download](#)

- ELISA

## Gene Info — BCL7B

Entrez GeneID	<a href="#">9275</a>
GeneBank Accession#	<a href="#">NM_001707</a>
Protein Accession#	<a href="#">NP_001698</a>
Gene Name	BCL7B
Gene Alias	-
Gene Description	B-cell CLL/lymphoma 7B
Omim ID	<a href="#">605846</a>
Gene Ontology	<a href="#">Hyperlink</a>

**Gene Summary**

The protein encoded by this gene contains a region that is highly similar to the N-terminal segment of BCL7A protein. The BCL7A protein is encoded by the gene known to be directly involved in a three-way gene translocation in a Burkitt lymphoma cell line. This gene is located at a chromosomal region commonly deleted in Williams syndrome. The function of this gene has not yet been determined. [provided by RefSeq]

**Other Designations**

OTTHUMP00000025030

**Disease**

- [Diabetes Mellitus](#)
- [Genetic Predisposition to Disease](#)