

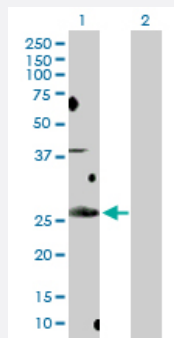
MaxPab®

BCL7B purified MaxPab rabbit polyclonal antibody (D01P)

Catalog # H00009275-D01P

Size 100 ug

Applications



Western Blot (Transfected lysate)

Western Blot analysis of BCL7B expression in transfected 293T cell line ([H00009275-T01](#)) by BCL7B MaxPab polyclonal antibody.

Lane 1: BCL7B transfected lysate(22.20 KDa).

Lane 2: Non-transfected lysate.

Specification

Product Description	Rabbit polyclonal antibody raised against a full-length human BCL7B protein.
Immunogen	BCL7B (NP_001698.2, 1 a.a. ~ 202 a.a) full-length human protein.
Sequence	MSGRSVRAETRSRAKDDIKKVMMAIEKVRKWEKKWVTVGDTSLRIFKWVPVTDTSKEKEKSKSNS SAAREPNGFSPDASANSLLLEFQDENSNQSSVSDVYQLKVDSSNTSSPSPQQSESLSPAHTS DFRTDDSQPPTLGQEILEEPSLPSSEVADEPPTLTKEEPVPLETQVVEEEEDSGAPPLKRFCVD QPTVPQTASES
Host	Rabbit
Reactivity	Human
Interspecies Antigen Sequence	Mouse (96)
Quality Control Testing	Antibody reactive against mammalian transfected lysate.
Storage Buffer	In 1x PBS, pH 7.4
Storage Instruction	Store at -20°C or lower. Aliquot to avoid repeated freezing and thawing.

Applications

- Western Blot (Transfected lysate)

Western Blot analysis of BCL7B expression in transfected 293T cell line ([H00009275-T01](#)) by BCL7B MaxPab polyclonal antibody.

Lane 1: BCL7B transfected lysate(22.20 KDa).

Lane 2: Non-transfected lysate.

[Protocol Download](#)

Gene Info — BCL7B

Entrez GeneID	9275
---------------	----------------------

GeneBank Accession#	NM_001707.2
---------------------	-----------------------------

Protein Accession#	NP_001698.2
--------------------	-----------------------------

Gene Name	BCL7B
-----------	-------

Gene Alias	-
------------	---

Gene Description	B-cell CLL/lymphoma 7B
------------------	------------------------

Omim ID	605846
---------	------------------------

Gene Ontology	Hyperlink
---------------	---------------------------

Gene Summary	The protein encoded by this gene contains a region that is highly similar to the N-terminal segment of BCL7A protein. The BCL7A protein is encoded by the gene known to be directly involved in a three-way gene translocation in a Burkitt lymphoma cell line. This gene is located at a chromosomal region commonly deleted in Williams syndrome. The function of this gene has not yet been determined. [provided by RefSeq]
--------------	---

Other Designations	OTTHUMP00000025030
--------------------	--------------------

Disease

- [Diabetes Mellitus](#)
- [Genetic Predisposition to Disease](#)