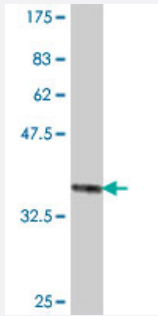


# BCL7B polyclonal antibody (A01)

Catalog # H00009275-A01

Size 50 uL

## Applications



Western Blot detection against Immunogen (34.8 KDa) .

## Specification

<b>Product Description</b>	Mouse polyclonal antibody raised against a partial recombinant BCL7B.
<b>Immunogen</b>	BCL7B (NP_001698, 124 a.a. ~ 202 a.a) partial recombinant protein with GST tag.
<b>Sequence</b>	AHTSDFRTDDSQPPTLGQEILEEPSLPSSEVADEPPTLTKEEPVPLETQVVEEEEDSGAPPLKRF CVDQPTVPQTASES
<b>Host</b>	Mouse
<b>Reactivity</b>	Human
<b>Interspecies Antigen Sequence</b>	Mouse (96)
<b>Quality Control Testing</b>	Antibody Reactive Against Recombinant Protein. Western Blot detection against Immunogen (34.8 KDa) .
<b>Storage Buffer</b>	50 % glycerol
<b>Storage Instruction</b>	Store at -20°C or lower. Aliquot to avoid repeated freezing and thawing.

## Applications

- Western Blot (Recombinant protein)

[Protocol Download](#)

- ELISA

## Gene Info — BCL7B

Entrez GeneID [9275](#)

GeneBank Accession# [NM\\_001707](#)

Protein Accession# [NP\\_001698](#)

Gene Name BCL7B

Gene Alias -

Gene Description B-cell CLL/lymphoma 7B

Omim ID [605846](#)

Gene Ontology [Hyperlink](#)

**Gene Summary** The protein encoded by this gene contains a region that is highly similar to the N-terminal segment of BCL7A protein. The BCL7A protein is encoded by the gene known to be directly involved in a three-way gene translocation in a Burkitt lymphoma cell line. This gene is located at a chromosomal region commonly deleted in Williams syndrome. The function of this gene has not yet been determined. [provided by RefSeq]

**Other Designations** OTTHUMP00000025030

## Disease

- [Diabetes Mellitus](#)
- [Genetic Predisposition to Disease](#)