

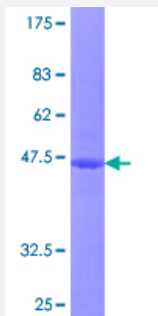
Full-Length

# ITGB1BP1 (Human) Recombinant Protein (P02)

Catalog # H00009270-P02

Size 25 ug, 10 ug

## Applications



## Specification

<b>Product Description</b>	Human ITGB1BP1 full-length ORF ( NP_004754.1, 1 a.a. - 200 a.a.) recombinant protein with GST-tag at N-terminal.
<b>Sequence</b>	MFRKGKKRHSSSSSSQSSEISTKSKSVDSLGLSLRSSTVASLDTDSTKSSGQSNNNSDTCAEFR IKYVGAIEKLKLSEKGLGGLDLINIDVAQQDGKLPFVPPEEEFIMGVSKYGIKVSTSDQYDVLHR HALYLIIRMVCYDDGLGAGKSLALKTTDASNEEYSLWVYQCNSLEQAQAICKVLSTAFDSVLTSE KP
<b>Host</b>	Wheat Germ (in vitro)
<b>Theoretical MW (kDa)</b>	48.2
<b>Interspecies Antigen Sequence</b>	Mouse (94); Rat (94)
<b>Preparation Method</b>	<a href="#">in vitro wheat germ expression system</a>
<b>Purification</b>	Glutathione Sepharose 4 Fast Flow
<b>Quality Control Testing</b>	12.5% SDS-PAGE Stained with Coomassie Blue.
<b>Storage Buffer</b>	50 mM Tris-HCl, 10 mM reduced Glutathione, pH=8.0 in the elution buffer.
<b>Storage Instruction</b>	Store at -80°C. Aliquot to avoid repeated freezing and thawing.

## Note

Best use within three months from the date of receipt of this protein.

## Applications

- Enzyme-linked Immunoabsorbent Assay
- Western Blot (Recombinant protein)
- Antibody Production
- Protein Array

## Gene Info — ITGB1BP1

Entrez GeneID [9270](#)

GeneBank Accession# [NM\\_004763.2](#)

Protein Accession# [NP\\_004754.1](#)

Gene Name ITGB1BP1

Gene Alias DKFZp686K08158, ICAP-1A, ICAP-1B, ICAP-1alpha, ICAP1, ICAP1A, ICAP1B

Gene Description integrin beta 1 binding protein 1

Omim ID [607153](#)

Gene Ontology [Hyperlink](#)

**Gene Summary** The cytoplasmic domains of integrins are essential for cell adhesion. The protein encoded by this gene binds to the beta1 integrin cytoplasmic domain. The interaction between this protein and beta1 integrin is highly specific. Two isoforms of this protein are derived from alternatively spliced transcripts. The shorter form of this protein does not interact with the beta1 integrin cytoplasmic domain. The longer form is a phosphoprotein and the extent of its phosphorylation is regulated by the cell-matrix interaction, suggesting an important role of this protein during integrin-dependent cell adhesion. [provided by RefSeq]

**Other Designations** OTTHUMP00000195586|bodin|integrin cytoplasmic domain-associated protein 1|integrin cytoplasmic domain-associated protein 1-alpha|integrin cytoplasmic domain-associated protein 1-beta

## Disease

- [Breast cancer](#)
- [Breast Neoplasms](#)
- [Genetic Predisposition to Disease](#)