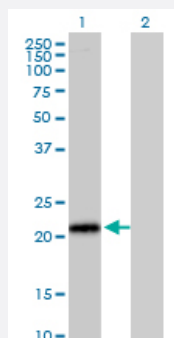


ITGB1BP1 monoclonal antibody (M09), clone 3B2

Catalog # H00009270-M09

Size 100 ug

Applications

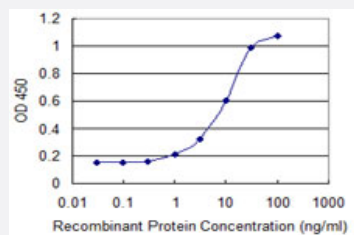


Western Blot (Transfected lysate)

Western Blot analysis of ITGB1BP1 expression in transfected 293T cell line by ITGB1BP1 monoclonal antibody (M09), clone 3B2.

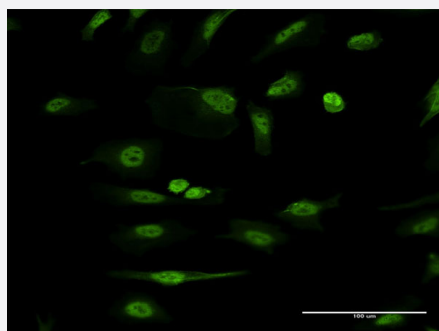
Lane 1: ITGB1BP1 transfected lysate(21.8 kDa).

Lane 2: Non-transfected lysate.



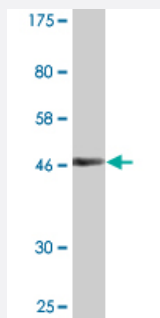
Sandwich ELISA (Recombinant protein)

Detection limit for recombinant GST tagged ITGB1BP1 is 0.3 ng/ml as a capture antibody.



Immunofluorescence

Immunofluorescence of monoclonal antibody to ITGB1BP1 on HeLa cell .
[antibody concentration 10 ug/ml]



Western Blot detection against Immunogen (47.74 KDa) .

Specification

Product Description	Mouse monoclonal antibody raised against a full-length recombinant ITGB1BP1.
Immunogen	ITGB1BP1 (AAH12264, 1 a.a. ~ 200 a.a) full-length recombinant protein with GST tag. MW of the GST tag alone is 26 KDa.
Sequence	MFRKGKKRHSSSSSQSSEISTKSKSVDSSLGGLSRSSSTVASLDTDSTKSSGQSNNNSDTCAEFR IKYVGAIEKLLKLGKGLGGLDLINIDVAQQDGKLPFVPPEEEFIMGVSKYGIKVSTSDQYDVLHR HALYLIIRMVCYDDGLGVGKSLALKTTDASNEEYSLWVYQCNSLEQAQAICKVLSTAFDSVLTSE KP
Host	Mouse
Reactivity	Human
Interspecies Antigen Sequence	Mouse (94); Rat (94)
Isotype	IgG2a Kappa
Quality Control Testing	Antibody Reactive Against Recombinant Protein. Western Blot detection against Immunogen (47.74 KDa) .
Storage Buffer	In 1x PBS, pH 7.4
Storage Instruction	Store at -20°C or lower. Aliquot to avoid repeated freezing and thawing.

Applications

- Western Blot (Transfected lysate)

Western Blot analysis of ITGB1BP1 expression in transfected 293T cell line by ITGB1BP1 monoclonal antibody (M09), clone 3B2.

Lane 1: ITGB1BP1 transfected lysate(21.8 KDa).

Lane 2: Non-transfected lysate.

[Protocol Download](#)

- Western Blot (Recombinant protein)

[Protocol Download](#)

- Sandwich ELISA (Recombinant protein)

Detection limit for recombinant GST tagged ITGB1BP1 is 0.3 ng/ml as a capture antibody.

[Protocol Download](#)

- ELISA

- Immunofluorescence

Immunofluorescence of monoclonal antibody to ITGB1BP1 on HeLa cell . [antibody concentration 10 ug/ml]

Gene Info — ITGB1BP1

Entrez GeneID [9270](#)

GeneBank Accession# [BC012264](#)

Protein Accession# [AAH12264](#)

Gene Name ITGB1BP1

Gene Alias DKFZp686K08158, ICAP-1A, ICAP-1B, ICAP-1alpha, ICAP1, ICAP1A, ICAP1B

Gene Description integrin beta 1 binding protein 1

Omim ID [607153](#)

Gene Ontology [Hyperlink](#)

Gene Summary

The cytoplasmic domains of integrins are essential for cell adhesion. The protein encoded by this gene binds to the beta1 integrin cytoplasmic domain. The interaction between this protein and beta1 integrin is highly specific. Two isoforms of this protein are derived from alternatively spliced transcripts. The shorter form of this protein does not interact with the beta1 integrin cytoplasmic domain. The longer form is a phosphoprotein and the extent of its phosphorylation is regulated by the cell-matrix interaction, suggesting an important role of this protein during integrin-dependent cell adhesion. [provided by RefSeq]

Other Designations

OTTHUMP00000195586|bodin|integrin cytoplasmic domain-associated protein 1|integrin cytoplasmic domain-associated protein 1-alpha|integrin cytoplasmic domain-associated protein 1-beta

Disease

- [Breast cancer](#)
- [Breast Neoplasms](#)
- [Genetic Predisposition to Disease](#)