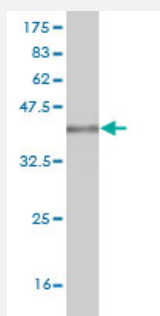


# ITGB1BP1 monoclonal antibody (M04), clone 3G4

Catalog # H00009270-M04

Size 100 ug

## Applications



Western Blot detection against Immunogen (36.74 KDa) .

## Specification

<b>Product Description</b>	Mouse monoclonal antibody raised against a partial recombinant ITGB1BP1.
<b>Immunogen</b>	ITGB1BP1 (AAH12264, 101 a.a. ~ 200 a.a) partial recombinant protein with GST tag. MW of the GST tag alone is 26 KDa.
<b>Sequence</b>	LPFVPPEEEFIMGVSKYGIKVSTSDQYDVLHRHALYLIIRMV/CYDDGLGVGKSLALKTTDASNEEY SLWVYQCNSLEQAQAICKVLSTAFDSVLTSEKP
<b>Host</b>	Mouse
<b>Reactivity</b>	Human
<b>Interspecies Antigen Sequence</b>	Mouse (94); Rat (94)
<b>Isotype</b>	IgG2b Kappa
<b>Quality Control Testing</b>	Antibody Reactive Against Recombinant Protein. Western Blot detection against Immunogen (36.74 KDa) .
<b>Storage Buffer</b>	In 1x PBS, pH 7.4
<b>Storage Instruction</b>	Store at -20°C or lower. Aliquot to avoid repeated freezing and thawing.

## Applications

- Western Blot (Recombinant protein)

[Protocol Download](#)

- ELISA

## Gene Info — ITGB1BP1

Entrez GeneID	<a href="#">9270</a>
GeneBank Accession#	<a href="#">BC012264</a>
Protein Accession#	<a href="#">AAH12264</a>
Gene Name	ITGB1BP1
Gene Alias	DKFZp686K08158, ICAP-1A, ICAP-1B, ICAP-1alpha, ICAP1, ICAP1A, ICAP1B
Gene Description	integrin beta 1 binding protein 1
Omim ID	<a href="#">607153</a>
Gene Ontology	<a href="#">Hyperlink</a>
Gene Summary	The cytoplasmic domains of integrins are essential for cell adhesion. The protein encoded by this gene binds to the beta1 integrin cytoplasmic domain. The interaction between this protein and beta1 integrin is highly specific. Two isoforms of this protein are derived from alternatively spliced transcripts. The shorter form of this protein does not interact with the beta1 integrin cytoplasmic domain. The longer form is a phosphoprotein and the extent of its phosphorylation is regulated by the cell-matrix interaction, suggesting an important role of this protein during integrin-dependent cell adhesion. [provided by RefSeq]
Other Designations	OTTHUMP00000195586 bodenin integrin cytoplasmic domain-associated protein 1 integrin cytoplasmic domain-associated protein 1-alpha integrin cytoplasmic domain-associated protein 1-beta

## Disease

- [Breast cancer](#)
- [Breast Neoplasms](#)

- [Genetic Predisposition to Disease](#)