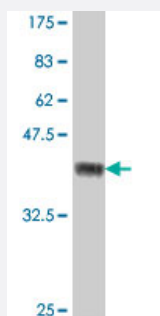


ITGB1BP1 polyclonal antibody (A01)

Catalog # H00009270-A01

Size 50 uL

Applications



Western Blot detection against Immunogen (37.11 KDa) .

Specification

Product Description	Mouse polyclonal antibody raised against a partial recombinant ITGB1BP1.
Immunogen	ITGB1BP1 (AAH12264, 101 a.a. ~ 200 a.a) partial recombinant protein with GST tag.
Sequence	LPFVPPEEEFIMGVSKYGIKVSTSDQYDVLHRHALYLIIRMVCYDDGLGVGKSLLALKTTDASNEEY SLWVYQCNSLEQAQAICKVLSTAFDSVLTSEKP
Host	Mouse
Reactivity	Human
Interspecies Antigen Sequence	Mouse (94); Rat (94)
Quality Control Testing	Antibody Reactive Against Recombinant Protein. Western Blot detection against Immunogen (37.11 KDa) .
Storage Buffer	50 % glycerol
Storage Instruction	Store at -20°C or lower. Aliquot to avoid repeated freezing and thawing.

Applications

- Western Blot (Recombinant protein)

[Protocol Download](#)

- ELISA

Gene Info — ITGB1BP1

Entrez GeneID [9270](#)

GeneBank Accession# [BC012264](#)

Protein Accession# [AAH12264](#)

Gene Name ITGB1BP1

Gene Alias DKFZp686K08158, ICAP-1A, ICAP-1B, ICAP-1alpha, ICAP1, ICAP1A, ICAP1B

Gene Description integrin beta 1 binding protein 1

Omim ID [607153](#)

Gene Ontology [Hyperlink](#)

Gene Summary The cytoplasmic domains of integrins are essential for cell adhesion. The protein encoded by this gene binds to the beta1 integrin cytoplasmic domain. The interaction between this protein and beta1 integrin is highly specific. Two isoforms of this protein are derived from alternatively spliced transcripts. The shorter form of this protein does not interact with the beta1 integrin cytoplasmic domain. The longer form is a phosphoprotein and the extent of its phosphorylation is regulated by the cell-matrix interaction, suggesting an important role of this protein during integrin-dependent cell adhesion. [provided by RefSeq]

Other Designations OTTHUMP00000195586|bodin|integrin cytoplasmic domain-associated protein 1|integrin cytoplasmic domain-associated protein 1-alpha|integrin cytoplasmic domain-associated protein 1-beta

Disease

- [Breast cancer](#)
- [Breast Neoplasms](#)
- [Genetic Predisposition to Disease](#)