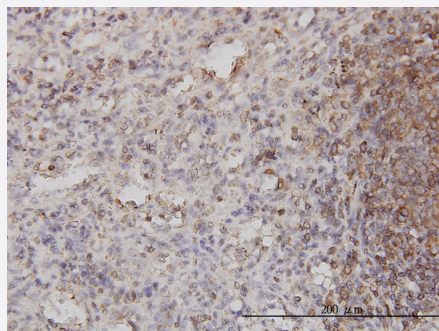


PSCD1 monoclonal antibody (M01), clone 1D6

Catalog # H00009267-M01

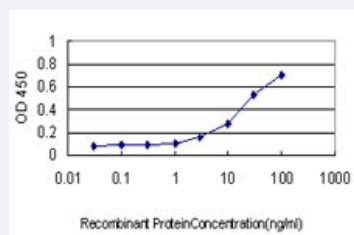
Size 100 ug

Applications



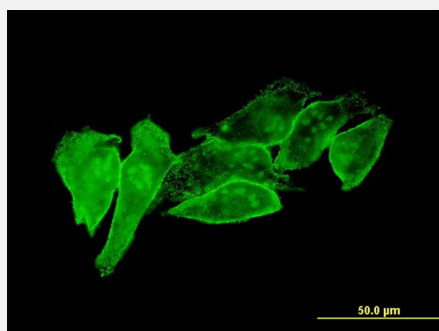
Immunohistochemistry (Formalin/PFA-fixed paraffin-embedded sections)

Immunoperoxidase of monoclonal antibody to PSCD1 on formalin-fixed paraffin-embedded human spleen. [antibody concentration 3 ug/ml]



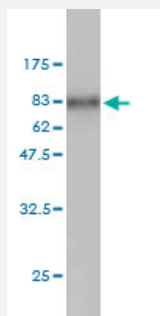
Sandwich ELISA (Recombinant protein)

Detection limit for recombinant GST tagged PSCD1 is approximately 1ng/ml as a capture antibody.



Immunofluorescence

Immunofluorescence of monoclonal antibody to PSCD1 on HeLa cell . [antibody concentration 10 ug/ml]



Western Blot detection against Immunogen (69.52 KDa) .

Specification

Product Description	Mouse monoclonal antibody raised against a full length recombinant PSCD1.
Immunogen	PSCD1 (AAH50452, 1 a.a. ~ 398 a.a) full-length recombinant protein with GST tag. MW of the GST tag alone is 26 KDa.
Sequence	MEEDDSYVPSDLTAEERQELENIRRRKQELLADIQRLKDEIAEVANEIENLGSTEERKNMQRNKQV AMGRKKFNMDPKKGIQFLIENDLLKNTCEDIAQFLYKGEGLNKTAIGDYLGERDEFNIQVLHAFVEL HEFTDLNLVQALRQFLWSFRLPGEAQKIDRMMEAFQAQRYCQCNGVVFQSTDTCYVLSFAIMLNT SLHNPVNDKPTVERFIAMNRGINDGGDLPEELLRNLYESIKNEPFKIPEDDGNDLTHTFFNPDPRE GWLLKLGGGRVKTWKRRWFILTDNCLYFEYTTDKPRGIIPLENLSIREVEDSKKPNCFELYPDN KDQVIKACKTEADGRVVEGNHTVYRISAPTPEEKEEWIKCIKAAISRDPFYEMLAARKKKVSSTKR H
Host	Mouse
Reactivity	Human
Interspecies Antigen Sequence	Mouse (96); Rat (98)
Isotype	IgG1 kappa
Quality Control Testing	Antibody Reactive Against Recombinant Protein. Western Blot detection against Immunogen (69.52 KDa) .
Storage Buffer	In 1x PBS, pH 7.4
Storage Instruction	Store at -20°C or lower. Aliquot to avoid repeated freezing and thawing.

Applications

- Western Blot (Recombinant protein)

[Protocol Download](#)

- Immunohistochemistry (Formalin/PFA-fixed paraffin-embedded sections)

Immunoperoxidase of monoclonal antibody to PSCD1 on formalin-fixed paraffin-embedded human spleen. [antibody concentration 3 ug/ml]

[Protocol Download](#)

- Sandwich ELISA (Recombinant protein)

Detection limit for recombinant GST tagged PSCD1 is approximately 1ng/ml as a capture antibody.

[Protocol Download](#)

- ELISA

- Immunofluorescence

Immunofluorescence of monoclonal antibody to PSCD1 on HeLa cell . [antibody concentration 10 ug/ml]

Gene Info — CYTH1

Entrez GeneID [9267](#)

GeneBank Accession# [BC050452](#)

Protein Accession# [AAH50452](#)

Gene Name CYTH1

Gene Alias B2-1, CYTOHESIN-1, D17S811E, FLJ34050, FLJ41900, PSCD1, SEC7

Gene Description cytohesin 1

Omim ID [182115](#)

Gene Ontology [Hyperlink](#)

Gene Summary

The protein encoded by this gene is a member of the PSCD family. Members of this family have identical structural organization that consists of an N-terminal coiled-coil motif, a central Sec7 domain, and a C-terminal pleckstrin homology (PH) domain. The coiled-coil motif is involved in homodimerization, the Sec7 domain contains guanine-nucleotide exchange protein (GEP) activity, and the PH domain interacts with phospholipids and is responsible for association of PSCDs with membranes. Members of this family appear to mediate the regulation of protein sorting and membrane trafficking. This gene is highly expressed in natural killer and peripheral T cells, and regulates the adhesiveness of integrins at the plasma membrane of lymphocytes. The encoded protein is 83 % homologous to that of CYTH2. [provided by RefSeq]

Other Designations OTTHUMP00000196778|cytoadhesin 1|homolog of secretory protein SEC7|pleckstrin homology, Sec7 and coiled-coil domains 1