

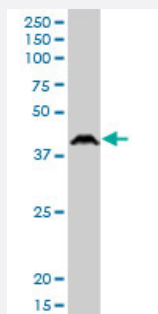
MaxPab®

PSCD1 purified MaxPab mouse polyclonal antibody (B01P)

Catalog # H00009267-B01P

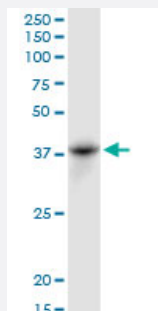
Size 50 ug

Applications



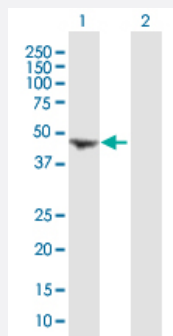
Western Blot (Cell lysate)

PSCD1 MaxPab polyclonal antibody. Western Blot analysis of PSCD1 expression in Jurkat.



Western Blot (Cell lysate)

CYTH1 MaxPab polyclonal antibody. Western Blot analysis of CYTH1 expression in NIH/3T3.



Western Blot (Transfected lysate)

Western Blot analysis of CYTH1 expression in transfected 293T cell line ([H00009267-T01](#)) by CYTH1 MaxPab polyclonal antibody.

Lane 1: PSCD1 transfected lysate(43.78 KDa).

Lane 2: Non-transfected lysate.

Specification

Product Description

Mouse polyclonal antibody raised against a full-length human PSCD1 protein.

Immunogen	PSCD1 (NP_004753.1, 1 a.a. ~ 398 a.a) full-length human protein.
Sequence	MEEDDSYVPSDLTAEERQELENIRRRKQELLADIQRLKDEIAEVANEIENLGSTEERKNMQRNKQV AMGRKKFNMDPKKGIQFLIENDLLKNTCEDIAQFLYKGEGLNKTAIGDYLGGERDEFNIQVLHAFVEL HEFTDLNLVQALRQFLWSFRLPGEAQKIDRMMEAFQRYCQCNGVFAQSTDTCYVLSFAIMLNT SLHNPNVKDKPTVERFIAMNRGINDGGDLPEELLRNLYESIKNEPFKIPEDDGNDLTHTFFNPDR GWLLKLGGGRVKTWKRRWFILTDNCLYYFEYTTDKPRGIIPLENLSIREVEDSKKPNCFELYPDN KDQVIKACKTEADGRVVEGNHTVYRISAPTPEEKEEWIKCIAAISRDPFYEMLAARKKKVSSTKR H
Host	Mouse
Reactivity	Human, Mouse
Interspecies Antigen Sequence	Mouse (96); Rat (98)
Quality Control Testing	Antibody reactive against mammalian transfected lysate.
Storage Buffer	In 1x PBS, pH 7.4
Storage Instruction	Store at -20°C or lower. Aliquot to avoid repeated freezing and thawing.

Applications

- Western Blot (Cell lysate)

PSCD1 MaxPab polyclonal antibody. Western Blot analysis of PSCD1 expression in Jurkat.

[Protocol Download](#)

- Western Blot (Cell lysate)

CYTH1 MaxPab polyclonal antibody. Western Blot analysis of CYTH1 expression in NIH/3T3.

[Protocol Download](#)

- Western Blot (Transfected lysate)

Western Blot analysis of CYTH1 expression in transfected 293T cell line ([H00009267-T01](#)) by CYTH1 MaxPab polyclonal antibody.

Lane 1: PSCD1 transfected lysate(43.78 KDa).

Lane 2: Non-transfected lysate.

[Protocol Download](#)

Gene Info — CYTH1

Entrez GeneID	9267
GeneBank Accession#	NM_004762.2
Protein Accession#	NP_004753.1
Gene Name	CYTH1
Gene Alias	B2-1, CYTOHESIN-1, D17S811E, FLJ34050, FLJ41900, PSCD1, SEC7
Gene Description	cytohesin 1
Omim ID	182115
Gene Ontology	Hyperlink
Gene Summary	<p>The protein encoded by this gene is a member of the PSCD family. Members of this family have identical structural organization that consists of an N-terminal coiled-coil motif, a central Sec7 domain, and a C-terminal pleckstrin homology (PH) domain. The coiled-coil motif is involved in homodimerization, the Sec7 domain contains guanine-nucleotide exchange protein (GEP) activity, and the PH domain interacts with phospholipids and is responsible for association of PSCDs with membranes. Members of this family appear to mediate the regulation of protein sorting and membrane trafficking. This gene is highly expressed in natural killer and peripheral T cells, and regulates the adhesiveness of integrins at the plasma membrane of lymphocytes. The encoded protein is 83 % homologous to that of CYTH2. [provided by RefSeq]</p>
Other Designations	OTTHUMP00000196778 cytoadhesin 1 homolog of secretory protein SEC7 pleckstrin homology, Sec7 and coiled-coil domains 1