

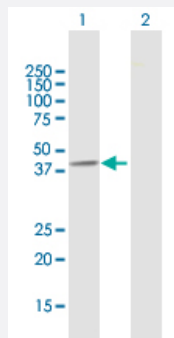
MaxPab®

CYTH2 MaxPab rabbit polyclonal antibody (D01)

Catalog # H00009266-D01

Size 100 uL

Applications

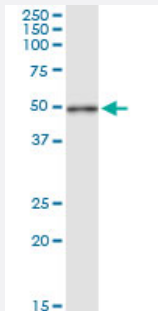


Western Blot (Transfected lysate)

Western Blot analysis of CYTH2 expression in transfected 293T cell line ([H00009266-T02](#)) by CYTH2 MaxPab polyclonal antibody.

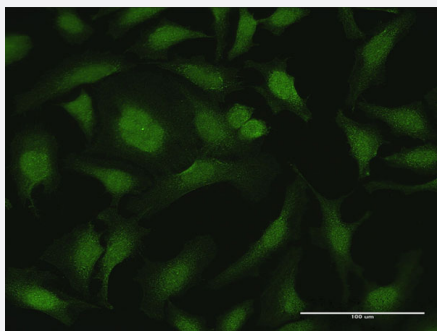
Lane 1: CYTH2 transfected lysate(46.5 KDa).

Lane 2: Non-transfected lysate.



Immunoprecipitation

Immunoprecipitation of CYTH2 transfected lysate using anti-CYTH2 MaxPab rabbit polyclonal antibody and Protein A Magnetic Bead, and immunoblotted with CYTH2 MaxPab mouse polyclonal antibody (B01) ([H00009266-B01](#)).



Immunofluorescence

Immunofluorescence of purified MaxPab antibody to CYTH2 on HeLa cell. [antibody concentration 10 ug/ml]

Specification

Product Description

Rabbit polyclonal antibody raised against a full-length human CYTH2 protein.

Immunogen	CYTH2 (NP_059431.1, 1 a.a. ~ 400 a.a) full-length human protein.
Sequence	MEDGVYEPPDLTPEERMELENIRRRKQELLVEIQLREELSEAMSEVEGLEANE GSKTLQRNRK MAMGRKKFNMDPKKGIQFLVENELLQNTPEE IARFLYKGEGLNKTAIGDYLGEREELNLAVLHAFV DLHEFTDLNLVQALRQFLWSFRLPGEAQKIDRMMEAF AQRYCLCNPGVFQSTDTCYVLSFAVIML NTSLHNPNVRDKPGLERFVAMNRGINEGGDLPEELLRNLYDSIRNEPFKIPEDDGNDLTHTFFNPD REGWLLKLGGRVKTWKRRWFILTDNCLYFEYTTDKEPRGIIPLENLSIREVDDPRKPNCFELYIP NNKGQLIKACKTEADGRVVEGNHVMYRISAPTQEEKDEWIKSIQAAVSVDPFYEMLAARKKRISVK KKQEQP
Host	Rabbit
Reactivity	Human
Interspecies Antigen Sequence	Mouse (99); Rat (99)
Quality Control Testing	Antibody reactive against mammalian transfected lysate.
Storage Buffer	No additive
Storage Instruction	Store at -20°C or lower. Aliquot to avoid repeated freezing and thawing.

Applications

- Western Blot (Transfected lysate)

Western Blot analysis of CYTH2 expression in transfected 293T cell line ([H00009266-T02](#)) by CYTH2 MaxPab polyclonal antibody.

Lane 1: CYTH2 transfected lysate(46.5 KDa).

Lane 2: Non-transfected lysate.

[Protocol Download](#)

- Immunoprecipitation

Immunoprecipitation of CYTH2 transfected lysate using anti-CYTH2 MaxPab rabbit polyclonal antibody and Protein A Magnetic Bead, and immunoblotted with CYTH2 MaxPab mouse polyclonal antibody (B01) ([H00009266-B01](#)).

[Protocol Download](#)

- Immunofluorescence

Immunofluorescence of purified MaxPab antibody to CYTH2 on HeLa cell. [antibody concentration 10 ug/ml]

Gene Info — CYTH2

Entrez GeneID	9266
GeneBank Accession#	NM_017457.3
Protein Accession#	NP_059431.1
Gene Name	CYTH2
Gene Alias	ARNO, CTS18, CTS18.1, PSCD2, PSCD2L, SEC7L, Sec7p-L, Sec7p-like
Gene Description	cytohesin 2
Omim ID	602488
Gene Ontology	Hyperlink
Gene Summary	<p>The protein encoded by this gene is a member of the PSCD family. Members of this family have identical structural organization that consists of an N-terminal coiled-coil motif, a central Sec7 domain, and a C-terminal pleckstrin homology (PH) domain. The coiled-coil motif is involved in homodimerization, the Sec7 domain contains guanine-nucleotide exchange protein (GEP) activity, and the PH domain interacts with phospholipids and is responsible for association of PSCDs with membranes. Members of this family appear to mediate the regulation of protein sorting and membrane trafficking. The encoded protein exhibits GEP activity in vitro with ARF1, ARF3, and ARF6 and is 83% homologous to CYTH1. Two transcript variants encoding different isoforms have been found for this gene. [provided by RefSeq]</p>
Other Designations	ARF exchange factor ARF nucleotide-binding site opener pleckstrin homology, Sec7 and coiled-coil domains 2 (cytohesin-2) pleckstrin homology, Sec7 and coiled-coil domains 2-like pleckstrin homology, Sec7 and coiled/coil domains 2 (cytohesin-2)