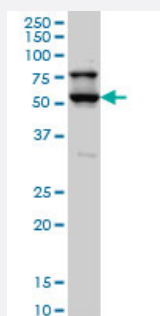


# STK17A monoclonal antibody (M03), clone 4D12

Catalog # H00009263-M03

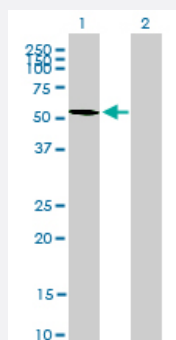
Size 100 ug

## Applications



### Western Blot (Cell lysate)

STK17A monoclonal antibody (M03), clone 4D12 Western Blot analysis of STK17A expression in HepG2 ( Cat # L019V1 ).

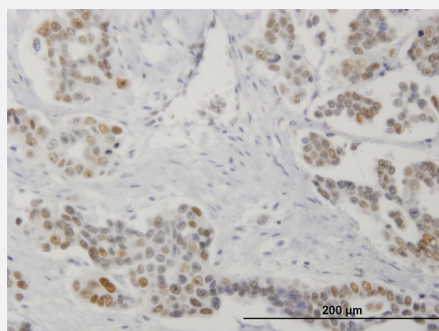


### Western Blot (Transfected lysate)

Western Blot analysis of STK17A expression in transfected 293T cell line by STK17A monoclonal antibody (M03), clone 4D12.

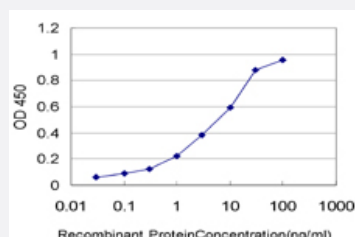
Lane 1: STK17A transfected lysate(46.6 KDa).

Lane 2: Non-transfected lysate.



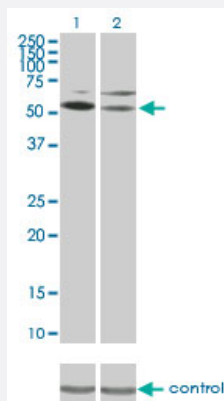
### Immunohistochemistry (Formalin/PFA-fixed paraffin-embedded sections)

Immunoperoxidase of monoclonal antibody to STK17A on formalin-fixed paraffin-embedded human colon cancer. [antibody concentration 1.2 ug/ml]



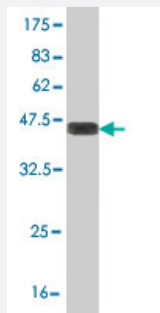
### Sandwich ELISA (Recombinant protein)

Detection limit for recombinant GST tagged STK17A is approximately 0.1ng/ml as a capture antibody.



## RNAi Knockdown (Antibody validated)

Western blot analysis of STK17A over-expressed 293 cell line, cotransfected with STK17A Validated Chimera RNAi ( Cat # H00009263-R01V ) (Lane 2) or non-transfected control (Lane 1). Blot probed with STK17A monoclonal antibody (M03) clone 4D12 (Cat # H00009263-M03 ). GAPDH ( 36.1 kDa ) used as specificity and loading control.



Western Blot detection against Immunogen (38.54 KDa) .

## Specification

<b>Product Description</b>	Mouse monoclonal antibody raised against a partial recombinant STK17A.
<b>Immunogen</b>	STK17A (AAH47696, 301 a.a. ~ 413 a.a) partial recombinant protein with GST tag. MW of the GST tag alone is 26 KDa.
<b>Sequence</b>	LLVKKPEDRATAEECLKHPWLTQSSIQEPSFRMEKALEEANALQEGHSVPEINSDTDKSETTEESI VTEELIVTSYTLGQCRQSEKEKMEQKAISKRFKFEEPLLQEIPGEFI
<b>Host</b>	Mouse
<b>Reactivity</b>	Human
<b>Isotype</b>	IgG2a Kappa
<b>Quality Control Testing</b>	Antibody Reactive Against Recombinant Protein. Western Blot detection against Immunogen (38.54 KDa) .
<b>Storage Buffer</b>	In 1x PBS, pH 7.4
<b>Storage Instruction</b>	Store at -20°C or lower. Aliquot to avoid repeated freezing and thawing.

## Applications

- Western Blot (Cell lysate)

STK17A monoclonal antibody (M03), clone 4D12 Western Blot analysis of STK17A expression in HepG2 ( Cat # L019V1 ).

[Protocol Download](#)

- Western Blot (Transfected lysate)

Western Blot analysis of STK17A expression in transfected 293T cell line by STK17A monoclonal antibody (M03), clone 4D12.

Lane 1: STK17A transfected lysate(46.6 KDa).

Lane 2: Non-transfected lysate.

[Protocol Download](#)

- Western Blot (Recombinant protein)

[Protocol Download](#)

- Immunohistochemistry (Formalin/PFA-fixed paraffin-embedded sections)

Immunoperoxidase of monoclonal antibody to STK17A on formalin-fixed paraffin-embedded human colon cancer. [antibody concentration 1.2 ug/ml]

[Protocol Download](#)

- Sandwich ELISA (Recombinant protein)

Detection limit for recombinant GST tagged STK17A is approximately 0.1ng/ml as a capture antibody.

[Protocol Download](#)

- ELISA

- RNAi Knockdown (Antibody validated)

Western blot analysis of STK17A over-expressed 293 cell line, cotransfected with STK17A Validated Chimera RNAi ( Cat # H00009263-R01V ) (Lane 2) or non-transfected control (Lane 1). Blot probed with STK17A monoclonal antibody (M03) clone 4D12 (Cat # H00009263-M03 ). GAPDH ( 36.1 kDa ) used as specificity and loading control.

[Protocol Download](#)

## Gene Info — STK17A

Entrez GeneID

[9263](#)

GeneBank Accession#	<a href="#">BC047696</a>
Protein Accession#	<a href="#">AAH47696</a>
Gene Name	STK17A
Gene Alias	DRAK1
Gene Description	serine/threonine kinase 17a
Omim ID	<a href="#">604726</a>
Gene Ontology	<a href="#">Hyperlink</a>
Gene Summary	This gene is a member of the DAP kinase-related apoptosis-inducing protein kinase family and encodes an autophosphorylated nuclear protein with a protein kinase domain. The protein has apoptosis-inducing activity. [provided by RefSeq]
Other Designations	DAP kinase-related apoptosis-inducing protein kinase 1 death-associated protein kinase-related 1 serine/threonine kinase 17a (apoptosis-inducing)

## Disease

- [Genetic Predisposition to Disease](#)
- [Kidney Failure](#)
- [Narcolepsy](#)
- [Thyroid Neoplasms](#)