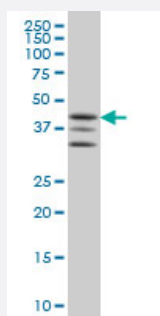


MAPKAPK2 monoclonal antibody (M01), clone 2B3

Catalog # H00009261-M01

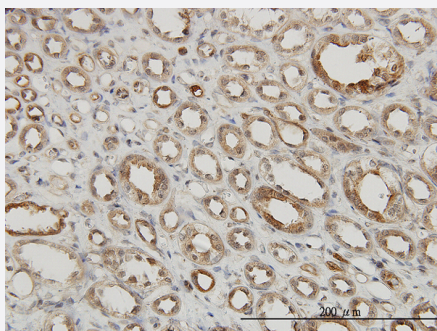
Size 100 ug

Applications



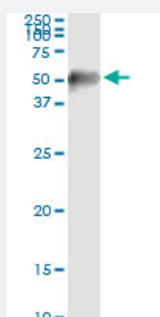
Western Blot (Cell lysate)

MAPKAPK2 monoclonal antibody (M01), clone 2B3 Western Blot analysis of MAPKAPK2 expression in K-562 (Cat # L009V1).



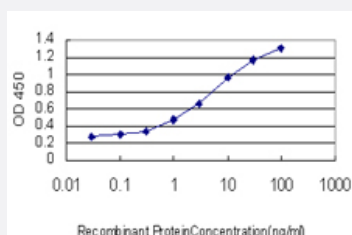
Immunohistochemistry (Formalin/PFA-fixed paraffin-embedded sections)

Immunoperoxidase of monoclonal antibody to MAPKAPK2 on formalin-fixed paraffin-embedded human kidney. [antibody concentration 3 ug/ml]



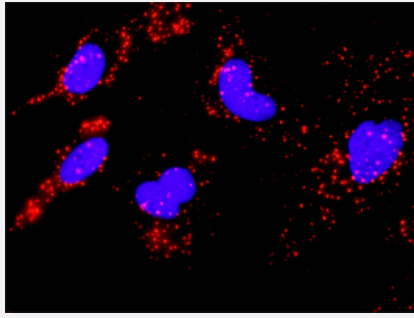
Immunoprecipitation

Immunoprecipitation of MAPKAPK2 transfected lysate using anti-MAPKAPK2 monoclonal antibody and Protein A Magnetic Bead, and immunoblotted with MAPKAPK2 MaxPab rabbit polyclonal antibody.



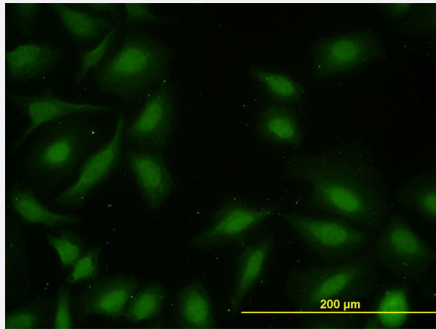
Sandwich ELISA (Recombinant protein)

Detection limit for recombinant GST tagged MAPKAPK2 is approximately 0.1ng/ml as a capture antibody.



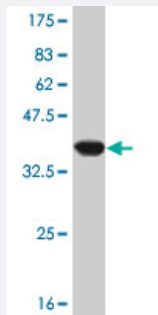
In situ Proximity Ligation Assay (Cell)

Proximity Ligation Analysis of protein-protein interactions between AKT1 and MAPKAPK2. HeLa cells were stained with anti-AKT1 rabbit purified polyclonal 1:1200 and anti-MAPKAPK2 mouse monoclonal antibody 1:50. Each red dot represents the detection of protein-protein interaction complex, and nuclei were counterstained with DAPI (blue).



Immunofluorescence

Immunofluorescence of monoclonal antibody to MAPKAPK2 on HeLa cell.
[antibody concentration 10 ug/ml]



Western Blot detection against Immunogen (36.63 KDa) .

Specification

Product Description	Mouse monoclonal antibody raised against a partial recombinant MAPKAPK2.
Immunogen	MAPKAPK2 (NP_116584, 302 a.a. ~ 400 a.a) partial recombinant protein with GST tag. MW of the GST tag alone is 26 KDa.
Sequence	IRNLLKTEPTQRMTITEFMNHPWIMQSTKVPQTPLHTSRVLKEDKERWEDVKEEMTSALATMRVD YEQIKIKKIEDASNPLLLKRRKKARALEAAALAH
Host	Mouse
Reactivity	Human
Interspecies Antigen Sequence	Mouse (92); Rat (92)
Isotype	IgG2b Kappa

Quality Control Testing

Antibody Reactive Against Recombinant Protein.
Western Blot detection against Immunogen (36.63 KDa) .

Storage Buffer

In 1x PBS, pH 7.4

Storage Instruction

Store at -20°C or lower. Aliquot to avoid repeated freezing and thawing.

Applications

- Western Blot (Cell lysate)

MAPKAPK2 monoclonal antibody (M01), clone 2B3 Western Blot analysis of MAPKAPK2 expression in K-562 (Cat # L009V1).

[Protocol Download](#)

- Western Blot (Recombinant protein)

[Protocol Download](#)

- Immunohistochemistry (Formalin/PFA-fixed paraffin-embedded sections)

Immunoperoxidase of monoclonal antibody to MAPKAPK2 on formalin-fixed paraffin-embedded human kidney. [antibody concentration 3 ug/ml]

[Protocol Download](#)

- Immunoprecipitation

Immunoprecipitation of MAPKAPK2 transfected lysate using anti-MAPKAPK2 monoclonal antibody and Protein A Magnetic Bead, and immunoblotted with MAPKAPK2 MaxPab rabbit polyclonal antibody.

[Protocol Download](#)

- Sandwich ELISA (Recombinant protein)

Detection limit for recombinant GST tagged MAPKAPK2 is approximately 0.1ng/ml as a capture antibody.

[Protocol Download](#)

- ELISA

- *In situ* Proximity Ligation Assay (Cell)

Proximity Ligation Analysis of protein-protein interactions between AKT1 and MAPKAPK2. HeLa cells were stained with anti-AKT1 rabbit purified polyclonal 1:1200 and anti-MAPKAPK2 mouse monoclonal antibody 1:50. Each red dot represents the detection of protein-protein interaction complex, and nuclei were counterstained with DAPI (blue).

- Immunofluorescence

Immunofluorescence of monoclonal antibody to MAPKAPK2 on HeLa cell. [antibody concentration 10 ug/ml]

Gene Info — MAPKAPK2

Entrez GeneID [9261](#)

GeneBank Accession# [NM_032960](#)

Protein Accession# [NP_116584](#)

Gene Name MAPKAPK2

Gene Alias MK2

Gene Description mitogen-activated protein kinase-activated protein kinase 2

Omim ID [602006](#)

Gene Ontology [Hyperlink](#)

Gene Summary This gene encodes a member of the Ser/Thr protein kinase family. This kinase is regulated through direct phosphorylation by p38 MAP kinase. In conjunction with p38 MAP kinase, this kinase is known to be involved in many cellular processes including stress and inflammatory responses, nuclear export, gene expression regulation and cell proliferation. Heat shock protein HSP27 was shown to be one of the substrates of this kinase in vivo. Two transcript variants encoding two different isoforms have been found for this gene. [provided by RefSeq]

Other Designations OTTHUMP00000034531|OTTHUMP00000034532

Pathway

- [MAPK signaling pathway](#)
- [Neurotrophin signaling pathway](#)
- [VEGF signaling pathway](#)