

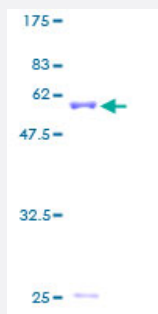
Full-Length

SCYE1 (Human) Recombinant Protein (P01)

Catalog # H00009255-P01

Size 25 ug, 10 ug

Applications



Specification

Product Description

Human SCYE1 full-length ORF (AAH14051, 1 a.a. - 312 a.a.) recombinant protein with GST-tag at N-terminal.

Sequence

MANND AVLKRLEQKGAEADQII EYKQQV SLLKEKAILQATLREEKKLRVENAKLKKEIEELKQELI
QAEIQNGVKQIPFPGTPLHANSMVSENIQSTAVTTVSSGTKEQIKGGTGDEKKAKEKIEKKGEK
KEKKQQSIAGSADSKPIDVSRDLRIGCIITARKHPDADSLYEEVDVGEIAPRTTVSGLVNHVPLE
QMQRNVILLCNLKPAMRGVLSQAMVMCASSPEKIEILAPPNGSVPGDRITFDAFPGEPAKELN
PKKKIWEQIQPDLHTNDEC VATYKGV PFVKGKGV CRAQTMSNSGIK

Host

Wheat Germ (in vitro)

Theoretical MW (kDa)

60.06

Interspecies Antigen Sequence

Mouse (85); Rat (86)

Preparation Method

[in vitro wheat germ expression system](#)

Purification

Glutathione Sepharose 4 Fast Flow

Quality Control Testing

12.5% SDS-PAGE Stained with Coomassie Blue.

Storage Buffer

50 mM Tris-HCl, 10 mM reduced Glutathione, pH=8.0 in the elution buffer.

Storage Instruction

Store at -80°C. Aliquot to avoid repeated freezing and thawing.

Note

Best use within three months from the date of receipt of this protein.

Applications

- Enzyme-linked Immunoabsorbent Assay
- Western Blot (Recombinant protein)
- Antibody Production
- Protein Array

Gene Info — SCYE1

Entrez GeneID[9255](#)**GeneBank Accession#**[BC014051](#)**Protein Accession#**[AAH14051](#)**Gene Name**

SCYE1

Gene Alias

AIMP1, EMAP2, EMAPII, p43

Gene Description

small inducible cytokine subfamily E, member 1 (endothelial monocyte-activating)

Omim ID[603605](#)**Gene Ontology**[Hyperlink](#)**Gene Summary**

The protein encoded by this gene is a cytokine that is specifically induced by apoptosis, and it is involved in the control of angiogenesis, inflammation, and wound healing. The release of this cytokine renders the tumor-associated vasculature sensitive to tumor necrosis factor. The precursor protein is identical to the p43 subunit, which is associated with the multi-tRNA synthetase complex, and it modulates aminoacylation activity of tRNA synthetase in normal cells. This protein is also involved in the stimulation of inflammatory responses after proteolytic cleavage in tumor cells. Multiple transcript variants encoding different isoforms have been found for this gene. A pseudogene has been identified on chromosome 20. [provided by RefSeq]

Other Designations

ARS-interacting multifunctional protein 1|OTTHUMP00000161878|endothelial monocyte-activating polypeptide 2|endothelial-monocyte activating polypeptide II|multisynthetase complex auxiliary component p43|small inducible cytokine subfamily E, member 1

Disease

- [Alcoholism](#)
- [Genetic Predisposition to Disease](#)