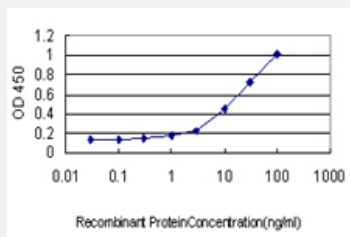


SCYE1 monoclonal antibody (M02), clone M1

Catalog # H00009255-M02

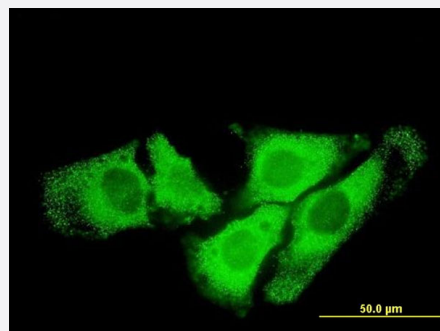
Size 100 ug

Applications



Sandwich ELISA (Recombinant protein)

Detection limit for recombinant GST tagged SCYE1 is approximately 1ng/ml as a capture antibody.



Immunofluorescence

Immunofluorescence of monoclonal antibody to SCYE1 on HeLa cell . [antibody concentration 10 ug/ml]

Specification

Product Description

Mouse monoclonal antibody raised against a full length recombinant SCYE1.

Immunogen

SCYE1 (AAH14051, 1 a.a. ~ 312 a.a) full-length recombinant protein with GST tag. MW of the GST tag alone is 26 KDa.

Sequence

MANNDVAVLKRLEQKGAEADQIIIEYLKQQVSLLKEKAILQATLREEKKLRVENAKLKKEIEELKQELI
QAEIQNGVKQIPFSPSGTPLHANSMVSENVISQSTAVTTVSSGTKEQIKGGTGDEKKAKEKIEKKGEK
KEKKQQSIAGSADSKPIDVSRDLRIGCIITARKHPDADSLYEEVDVGEIAPRTVVSGLVNHVPLE
QMQRNRMVILLCNLKPAMRGVLSQAMVMCASSPEKIEILAPPNGSVPGDRITFDAPGEPDKELN
PKKKIWEQIQPDLTNDCEVATYKGVPPFEVKGKGVCRATMSNSGIK

Host

Mouse

Reactivity	Human
Interspecies Antigen Sequence	Mouse (85); Rat (86)
Isotype	IgG1 kappa
Quality Control Testing	Antibody Reactive Against Recombinant Protein.
Storage Buffer	In 1x PBS, pH 7.4
Storage Instruction	Store at -20°C or lower. Aliquot to avoid repeated freezing and thawing.

Applications

- Sandwich ELISA (Recombinant protein)

Detection limit for recombinant GST tagged SCYE1 is approximately 1 ng/ml as a capture antibody.

[Protocol Download](#)

- ELISA

- Immunofluorescence

Immunofluorescence of monoclonal antibody to SCYE1 on HeLa cell . [antibody concentration 10 ug/ml]

Gene Info — SCYE1

Entrez GeneID	9255
GeneBank Accession#	BC014051
Protein Accession#	AAH14051
Gene Name	SCYE1
Gene Alias	AIMP1, EMAP2, EMAPII, p43
Gene Description	small inducible cytokine subfamily E, member 1 (endothelial monocyte-activating)
Omim ID	603605
Gene Ontology	Hyperlink

Gene Summary

The protein encoded by this gene is a cytokine that is specifically induced by apoptosis, and it is involved in the control of angiogenesis, inflammation, and wound healing. The release of this cytokine renders the tumor-associated vasculature sensitive to tumor necrosis factor. The precursor protein is identical to the p43 subunit, which is associated with the multi-tRNA synthetase complex, and it modulates aminoacylation activity of tRNA synthetase in normal cells. This protein is also involved in the stimulation of inflammatory responses after proteolytic cleavage in tumor cells. Multiple transcript variants encoding different isoforms have been found for this gene. A pseudogene has been identified on chromosome 20. [provided by RefSeq]

Other Designations

ARS-interacting multifunctional protein 1|OTTHUMP00000161878|endothelial monocyte-activating polypeptide 2|endothelial-monocyte activating polypeptide II|multisynthetase complex auxiliary component p43|small inducible cytokine subfamily E, member 1

Disease

- [Alcoholism](#)
- [Genetic Predisposition to Disease](#)