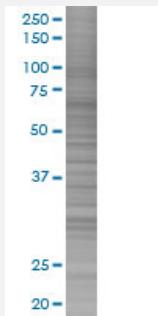


# UBE2L6 293T Cell Transient Overexpression Lysate(Denatured)

Catalog # H00009246-T01

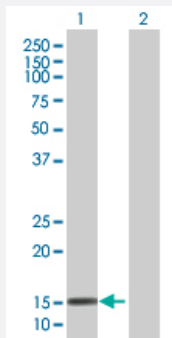
Size 100 uL

## Applications



### SDS-PAGE Gel

UBE2L6 transfected lysate.



### Western Blot

Lane 1: UBE2L6 transfected lysate ( 17.8 KDa)

Lane 2: Non-transfected lysate.

## Specification

Transfected Cell Line	293T
Plasmid	pCMV-UBE2L6 full-length
Host	Human
Theoretical MW (kDa)	17.8
Interspecies Antigen Sequence	Mouse (76); Rat (73)

#### Quality Control Testing

Transient overexpression cell lysate was tested with Anti-UBE2L6 antibody ([H00009246-B01](#)) by Western Blots.  
 SDS-PAGE Gel  
 UBE2L6 transfected lysate.  
 Western Blot  
 Lane 1: UBE2L6 transfected lysate ( 17.8 KDa)  
 Lane 2: Non-transfected lysate.

#### Storage Buffer

1X Sample Buffer (50 mM Tris-HCl, 2% SDS, 10% glycerol, 300 mM 2-mercaptoethanol, 0.01% Bromophenol blue)

#### Storage Instruction

Store at -80°C. Aliquot to avoid repeated freezing and thawing.

## Applications

- Western Blot

## Gene Info — UBE2L6

#### Entrez GeneID

[9246](#)

#### GeneBank Accession#

[NM\\_004223.3](#)

#### Protein Accession#

-

#### Gene Name

UBE2L6

#### Gene Alias

MGC40331, RIG-B, UBCH8

#### Gene Description

ubiquitin-conjugating enzyme E2L 6

#### Omim ID

[603890](#)

#### Gene Ontology

[Hyperlink](#)

#### Gene Summary

The modification of proteins with ubiquitin is an important cellular mechanism for targeting abnormal or short-lived proteins for degradation. Ubiquitination involves at least three classes of enzymes: ubiquitin-activating enzymes (E1s), ubiquitin-conjugating enzymes (E2s) and ubiquitin-protein ligases (E3s). This gene encodes a member of the E2 ubiquitin-conjugating enzyme family. This enzyme is highly similar in primary structure to the enzyme encoded by UBE2L3 gene. Two alternatively spliced transcript variants encoding distinct isoforms have been found for this gene. [provided by RefSeq]

#### Other Designations

retinoic acid induced gene B protein|ubiquitin carrier protein|ubiquitin-protein ligase

## Pathway

- [Ubiquitin mediated proteolysis](#)