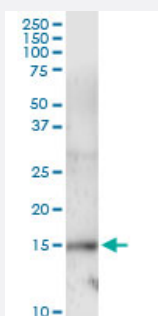


UBE2L6 (Human) IP-WB Antibody Pair

Catalog # H00009246-PW1

Size 1 Set

Applications



Immunoprecipitation of UBE2L6 transfected lysate using rabbit polyclonal anti-UBE2L6 and Protein A Magnetic Bead ([U0007](#)), and immunoblotted with mouse polyclonal anti-UBE2L6.

Specification

Product Description	This IP-WB antibody pair set comes with one antibody for immunoprecipitation and another to detect the precipitated protein in western blot.
Reactivity	Human
Interspecies Antigen Sequence	Mouse (76); Rat (73)
Quality Control Testing	Immunoprecipitation-Western Blot (IP-WB) Immunoprecipitation of UBE2L6 transfected lysate using rabbit polyclonal anti-UBE2L6 and Protein A Magnetic Bead (U0007), and immunoblotted with mouse polyclonal anti-UBE2L6.
Supplied Product	Antibody pair set content: 1. Antibody pair for IP: rabbit polyclonal anti-UBE2L6 (300 ul) 2. Antibody pair for WB: mouse polyclonal anti-UBE2L6 (50 ul)
Storage Instruction	Store reagents of the antibody pair set at -20°C or lower. Please aliquot to avoid repeated freeze thaw cycle. Reagents should be returned to -20°C storage immediately after use.

Applications

- Immunoprecipitation-Western Blot

[Protocol Download](#)

Gene Info — UBE2L6

Entrez GeneID [9246](#)

Gene Name UBE2L6

Gene Alias MGC40331, RIG-B, UBCH8

Gene Description ubiquitin-conjugating enzyme E2L 6

Omim ID [603890](#)

Gene Ontology [Hyperlink](#)

Gene Summary The modification of proteins with ubiquitin is an important cellular mechanism for targeting abnormal or short-lived proteins for degradation. Ubiquitination involves at least three classes of enzymes: ubiquitin-activating enzymes (E1s), ubiquitin-conjugating enzymes (E2s) and ubiquitin-protein ligases (E3s). This gene encodes a member of the E2 ubiquitin-conjugating enzyme family. This enzyme is highly similar in primary structure to the enzyme encoded by UBE2L3 gene. Two alternatively spliced transcript variants encoding distinct isoforms have been found for this gene. [provided by RefSeq]

Other Designations retinoic acid induced gene B protein|ubiquitin carrier protein|ubiquitin-protein ligase

Pathway

- [Ubiquitin mediated proteolysis](#)