

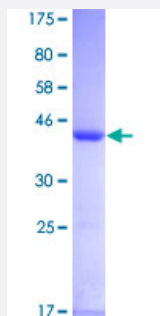
Full-Length

# UBE2L6 (Human) Recombinant Protein (P01)

Catalog # H00009246-P01

Size 25 ug, 10 ug

## Applications



## Specification

Product Description	Human UBE2L6 full-length ORF ( AAH32491, 1 a.a. - 153 a.a.) recombinant protein with GST-tag at N-terminal.
Sequence	MMASMRVVKELEDLQKKPPPYLRNLSSDDANVLVWHALLLPDQPPYHLKAFNLRISFPPEYPFK PPMIKFTTKYHPNVDENGQICLPISSENWKPCTKTCQVLEALNVLVNRPNIREPLRMDLADLLTQN PELFRKNAEEFTLRFGVDRPS
Host	Wheat Germ (in vitro)
Theoretical MW (kDa)	42.57
Interspecies Antigen Sequence	Mouse (76); Rat (73)
Preparation Method	<a href="#">in vitro wheat germ expression system</a>
Purification	Glutathione Sepharose 4 Fast Flow
Quality Control Testing	12.5% SDS-PAGE Stained with Coomassie Blue.
Storage Buffer	50 mM Tris-HCl, 10 mM reduced Glutathione, pH=8.0 in the elution buffer.
Storage Instruction	Store at -80°C. Aliquot to avoid repeated freezing and thawing.

## Note

Best use within three months from the date of receipt of this protein.

## Applications

- Enzyme-linked Immunoabsorbent Assay
- Western Blot (Recombinant protein)
- Antibody Production
- Protein Array

## Gene Info — UBE2L6

Entrez GeneID [9246](#)

GeneBank Accession# [BC032491](#)

Protein Accession# [AAH32491](#)

Gene Name UBE2L6

Gene Alias MGC40331, RIG-B, UBCH8

Gene Description ubiquitin-conjugating enzyme E2L 6

Omim ID [603890](#)

Gene Ontology [Hyperlink](#)

**Gene Summary** The modification of proteins with ubiquitin is an important cellular mechanism for targeting abnormal or short-lived proteins for degradation. Ubiquitination involves at least three classes of enzymes: ubiquitin-activating enzymes (E1s), ubiquitin-conjugating enzymes (E2s) and ubiquitin-protein ligases (E3s). This gene encodes a member of the E2 ubiquitin-conjugating enzyme family. This enzyme is highly similar in primary structure to the enzyme encoded by UBE2L3 gene. Two alternatively spliced transcript variants encoding distinct isoforms have been found for this gene. [provided by RefSeq]

**Other Designations** retinoic acid induced gene B protein|ubiquitin carrier protein|ubiquitin-protein ligase

## Pathway

- [Ubiquitin mediated proteolysis](#)