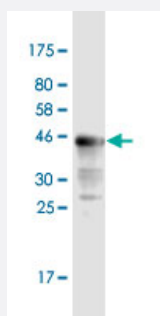


UBE2L6 monoclonal antibody (M01A), clone S1

Catalog # H00009246-M01A

Size 200 uL

Applications



Western Blot detection against Immunogen (42.57 KDa) .

Specification

Product Description	Mouse monoclonal antibody raised against a full-length recombinant UBE2L6.
Immunogen	UBE2L6 (AAH32491, 1 a.a. ~ 153 a.a) full-length recombinant protein with GST tag. MW of the GST tag alone is 26 KDa.
Sequence	MMASMRVVKELEDLQKKPPPYLRNLSSDDANVLVWHALLLPDQPPYHLKAFNLRISFPPEYPFK PPMIKFTTKIYHPNVDENGQICLPISSENWKPCCTKTCQVLEALNVLVNRPNIREPLRMDLADLLTQN PELFRKNAAEEFTLRFGVDRPS
Host	Mouse
Reactivity	Human
Interspecies Antigen Sequence	Mouse (76); Rat (73)
Isotype	IgG1 Kappa
Quality Control Testing	Antibody Reactive Against Recombinant Protein. Western Blot detection against Immunogen (42.57 KDa) .
Storage Buffer	In ascites fluid
Storage Instruction	Store at -20°C or lower. Aliquot to avoid repeated freezing and thawing.

Applications

- Western Blot (Recombinant protein)

[Protocol Download](#)

- ELISA

Gene Info — UBE2L6

Entrez GeneID [9246](#)

GeneBank Accession# [BC032491](#)

Protein Accession# [AAH32491](#)

Gene Name UBE2L6

Gene Alias MGC40331, RIG-B, UBCH8

Gene Description ubiquitin-conjugating enzyme E2L 6

Omim ID [603890](#)

Gene Ontology [Hyperlink](#)

Gene Summary

The modification of proteins with ubiquitin is an important cellular mechanism for targeting abnormal or short-lived proteins for degradation. Ubiquitination involves at least three classes of enzymes: ubiquitin-activating enzymes (E1s), ubiquitin-conjugating enzymes (E2s) and ubiquitin-protein ligases (E3s). This gene encodes a member of the E2 ubiquitin-conjugating enzyme family. This enzyme is highly similar in primary structure to the enzyme encoded by UBE2L3 gene. Two alternatively spliced transcript variants encoding distinct isoforms have been found for this gene. [provided by RefSeq]

Other Designations retinoic acid induced gene B protein|ubiquitin carrier protein|ubiquitin-protein ligase

Pathway

- [Ubiquitin mediated proteolysis](#)