

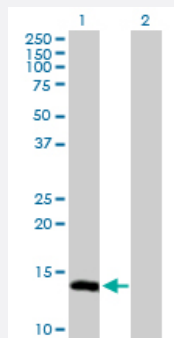
MaxPab®

UBE2L6 purified MaxPab rabbit polyclonal antibody (D01P)

Catalog # H00009246-D01P

Size 100 ug

Applications



Western Blot (Transfected lysate)

Western Blot analysis of UBE2L6 expression in transfected 293T cell line ([H00009246-T02](#)) by UBE2L6 MaxPab polyclonal antibody.

Lane 1: UBE2L6 transfected lysate(17.80 kDa).

Lane 2: Non-transfected lysate.

Specification

| | |
|-------------------------------|---|
| Product Description | Rabbit polyclonal antibody raised against a full-length human UBE2L6 protein. |
| Immunogen | UBE2L6 (NP_004214.1, 1 a.a. ~ 153 a.a) full-length human protein. |
| Sequence | MMASMRVVKELEDLQKKPPPYLRNLSSDDANVLVWHALLLPDQPPYHLKAFNLRISFPPEYPFK PPMIKFTTKIYHPNVDENGQICLPISSENWKPCCTKTCQVLEALNVLVNRPNIREPLRMDLADLLTQN PELFRKNAEEFTLRFGVDRPS |
| Host | Rabbit |
| Reactivity | Human |
| Interspecies Antigen Sequence | Mouse (76); Rat (73) |
| Quality Control Testing | Antibody reactive against mammalian transfected lysate. |
| Storage Buffer | In 1x PBS, pH 7.4 |
| Storage Instruction | Store at -20°C or lower. Aliquot to avoid repeated freezing and thawing. |

Applications

- Western Blot (Transfected lysate)

Western Blot analysis of UBE2L6 expression in transfected 293T cell line ([H00009246-T02](#)) by UBE2L6 MaxPab polyclonal antibody.

Lane 1: UBE2L6 transfected lysate(17.80 KDa).

Lane 2: Non-transfected lysate.

[Protocol Download](#)

Gene Info — UBE2L6

Entrez GeneID [9246](#)

GeneBank Accession# [NM_004223.3](#)

Protein Accession# [NP_004214.1](#)

Gene Name UBE2L6

Gene Alias MGC40331, RIG-B, UBCH8

Gene Description ubiquitin-conjugating enzyme E2L 6

Omim ID [603890](#)

Gene Ontology [Hyperlink](#)

Gene Summary The modification of proteins with ubiquitin is an important cellular mechanism for targeting abnormal or short-lived proteins for degradation. Ubiquitination involves at least three classes of enzymes: ubiquitin-activating enzymes (E1s), ubiquitin-conjugating enzymes (E2s) and ubiquitin-protein ligases (E3s). This gene encodes a member of the E2 ubiquitin-conjugating enzyme family. This enzyme is highly similar in primary structure to the enzyme encoded by UBE2L3 gene. Two alternatively spliced transcript variants encoding distinct isoforms have been found for this gene. [provided by RefSeq]

Other Designations retinoic acid induced gene B protein|ubiquitin carrier protein|ubiquitin-protein ligase

Pathway

- [Ubiquitin mediated proteolysis](#)