

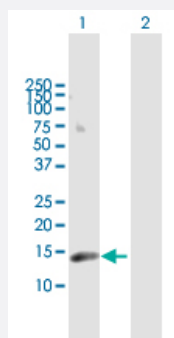
MaxPab®

# UBE2L6 MaxPab rabbit polyclonal antibody (D01)

Catalog # H00009246-D01

Size 100 uL

## Applications

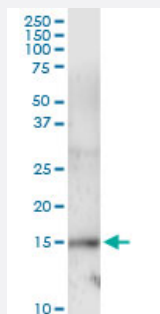


### Western Blot (Transfected lysate)

Western Blot analysis of UBE2L6 expression in transfected 293T cell line ([H00009246-T02](#)) by UBE2L6 MaxPab polyclonal antibody.

Lane 1: UBE2L6 transfected lysate(17.8 kDa).

Lane 2: Non-transfected lysate.



### Immunoprecipitation

Immunoprecipitation of UBE2L6 transfected lysate using anti-UBE2L6 MaxPab rabbit polyclonal antibody and Protein A Magnetic Bead, and immunoblotted with UBE2L6 MaxPab mouse polyclonal antibody (B01) ([H00009246-B01](#)).

## Specification

Product Description	Rabbit polyclonal antibody raised against a full-length human UBE2L6 protein.
Immunogen	UBE2L6 (NP_004214.1, 1 a.a. ~ 153 a.a) full-length human protein.
Sequence	MMASMRVVKELEDLQKKPPPYLRNLSSDDANVLVWHALLLPDQPPYHLKAFNLRISFPPEYPFK PPMIKFTTKYHPNVDENGQICLPIISSENWKPCTKTCQVLEALNVLVNRPNIREPLRMDLADLLTQN PELFRKNAEEFTLRFGVDRPS
Host	Rabbit
Reactivity	Human

Interspecies Antigen Sequence	Mouse (76); Rat (73)
Quality Control Testing	Antibody reactive against mammalian transfected lysate.
Storage Buffer	No additive
Storage Instruction	Store at -20°C or lower. Aliquot to avoid repeated freezing and thawing.

## Applications

- Western Blot (Transfected lysate)

Western Blot analysis of UBE2L6 expression in transfected 293T cell line ([H00009246-T02](#)) by UBE2L6 MaxPab polyclonal antibody.

Lane 1: UBE2L6 transfected lysate(17.8 KDa).

Lane 2: Non-transfected lysate.

[Protocol Download](#)

- Immunoprecipitation

Immunoprecipitation of UBE2L6 transfected lysate using anti-UBE2L6 MaxPab rabbit polyclonal antibody and Protein A Magnetic Bead, and immunoblotted with UBE2L6 MaxPab mouse polyclonal antibody (B01) ([H00009246-B01](#)).

[Protocol Download](#)

## Gene Info — UBE2L6

Entrez GeneID	<a href="#">9246</a>
GeneBank Accession#	<a href="#">NM_004223.3</a>
Protein Accession#	<a href="#">NP_004214.1</a>
Gene Name	UBE2L6
Gene Alias	MGC40331, RIG-B, UBCH8
Gene Description	ubiquitin-conjugating enzyme E2L 6
Omim ID	<a href="#">603890</a>
Gene Ontology	<a href="#">Hyperlink</a>

**Gene Summary**

The modification of proteins with ubiquitin is an important cellular mechanism for targeting abnormal or short-lived proteins for degradation. Ubiquitination involves at least three classes of enzymes: ubiquitin-activating enzymes (E1s), ubiquitin-conjugating enzymes (E2s) and ubiquitin-protein ligases (E3s). This gene encodes a member of the E2 ubiquitin-conjugating enzyme family. This enzyme is highly similar in primary structure to the enzyme encoded by UBE2L3 gene. Two alternatively spliced transcript variants encoding distinct isoforms have been found for this gene. [provided by RefSeq]

**Other Designations**

retinoic acid induced gene B protein|ubiquitin carrier protein|ubiquitin-protein ligase

**Pathway**

- [Ubiquitin mediated proteolysis](#)