

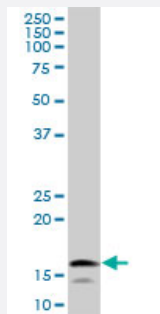
MaxPab®

UBE2L6 MaxPab mouse polyclonal antibody (B01)

Catalog # H00009246-B01

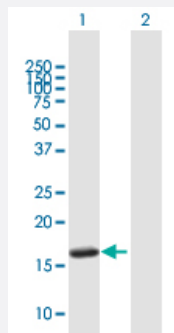
Size 50 uL

Applications



Western Blot (Cell lysate)

UBE2L6 MaxPab polyclonal antibody. Western Blot analysis of UBE2L6 expression in K-562.



Western Blot (Transfected lysate)

Western Blot analysis of UBE2L6 expression in transfected 293T cell line ([H00009246-T01](#)) by UBE2L6 MaxPab polyclonal antibody.

Lane 1: UBE2L6 transfected lysate(16.83 KDa).

Lane 2: Non-transfected lysate.

Specification

Product Description	Mouse polyclonal antibody raised against a full-length human UBE2L6 protein.
Immunogen	UBE2L6 (NP_004214.1, 1 a.a. ~ 153 a.a) full-length human protein.
Sequence	MMASMRVVKELEDLQKKPPPYLRNLSSDDANVLVWHALLLPDQPPYHLKAFNLRISFPPEYPFK PPMIKFTTKIYHPNVDENGQICLPIISSENWKPCTKTCQVLEALNVLVNRPNIREPLRMDLADLLTQN PELFRKNAAEEFTLRFGVDRPS
Host	Mouse
Reactivity	Human

Interspecies Antigen Sequence	Mouse (76); Rat (73)
-------------------------------	----------------------

Quality Control Testing	Antibody reactive against mammalian transfected lysate.
-------------------------	---

Storage Buffer	No additive
----------------	-------------

Storage Instruction	Store at -20°C or lower. Aliquot to avoid repeated freezing and thawing.
---------------------	--

Note	For IHC and IF applications, antibody purification with Protein A will be needed prior to use.
------	--

Applications

- Western Blot (Cell lysate)

UBE2L6 MaxPab polyclonal antibody. Western Blot analysis of UBE2L6 expression in K-562.

[Protocol Download](#)

- Western Blot (Transfected lysate)

Western Blot analysis of UBE2L6 expression in transfected 293T cell line ([H00009246-T01](#)) by UBE2L6 MaxPab polyclonal antibody.

Lane 1: UBE2L6 transfected lysate(16.83 KDa).

Lane 2: Non-transfected lysate.

[Protocol Download](#)

Gene Info — UBE2L6

Entrez GeneID	9246
---------------	----------------------

GeneBank Accession#	NM_004223.3
---------------------	-----------------------------

Protein Accession#	NP_004214.1
--------------------	-----------------------------

Gene Name	UBE2L6
-----------	--------

Gene Alias	MGC40331, RIG-B, UBCH8
------------	------------------------

Gene Description	ubiquitin-conjugating enzyme E2L 6
------------------	------------------------------------

Omim ID	603890
---------	------------------------

Gene Ontology	Hyperlink
---------------	---------------------------

Gene Summary

The modification of proteins with ubiquitin is an important cellular mechanism for targeting abnormal or short-lived proteins for degradation. Ubiquitination involves at least three classes of enzymes: ubiquitin-activating enzymes (E1s), ubiquitin-conjugating enzymes (E2s) and ubiquitin-protein ligases (E3s). This gene encodes a member of the E2 ubiquitin-conjugating enzyme family. This enzyme is highly similar in primary structure to the enzyme encoded by UBE2L3 gene. Two alternatively spliced transcript variants encoding distinct isoforms have been found for this gene. [provided by RefSeq]

Other Designations

retinoic acid induced gene B protein|ubiquitin carrier protein|ubiquitin-protein ligase

Pathway

- [Ubiquitin mediated proteolysis](#)