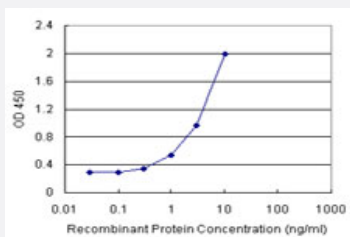


# UBE2L6 (Human) Matched Antibody Pair

Catalog # H00009246-AP21

Size 1 Set

## Applications



Sandwich ELISA detection sensitivity ranging from 0.3 ng/ml to 100 ng/ml.

## Specification

<b>Product Description</b>	This antibody pair set comes with a matched antibody pair to detect and quantify the protein level of human UBE2L6.
<b>Reactivity</b>	Human
<b>Interspecies Antigen Sequence</b>	Mouse (76); Rat (73)
<b>Quality Control Testing</b>	Standard curve using recombinant protein ( H00009246-P01 ) as an analyte. Sandwich ELISA detection sensitivity ranging from 0.3 ng/ml to 100 ng/ml.
<b>Supplied Product</b>	Antibody pair set content: 1. Capture antibody: rabbit MaxPab® affinity purified polyclonal anti-UBE2L6 (100 ug) 2. Detection antibody: mouse purified polyclonal anti-UBE2L6 (20 ug) *Reagents are sufficient for at least 1-2 x 96 well plates using recommended protocols.
<b>Storage Instruction</b>	Store reagents of the antibody pair set at -20°C or lower. Please aliquot to avoid repeated freeze thaw cycle. Reagents should be returned to -20°C storage immediately after use.

## Applications

- ELISA Pair (Recombinant protein)

[Protocol Download](#)

## Gene Info — UBE2L6

**Entrez GeneID** [9246](#)

**Gene Name** UBE2L6

**Gene Alias** MGC40331, RIG-B, UBCH8

**Gene Description** ubiquitin-conjugating enzyme E2L 6

**Omim ID** [603890](#)

**Gene Ontology** [Hyperlink](#)

**Gene Summary** The modification of proteins with ubiquitin is an important cellular mechanism for targeting abnormal or short-lived proteins for degradation. Ubiquitination involves at least three classes of enzymes: ubiquitin-activating enzymes (E1s), ubiquitin-conjugating enzymes (E2s) and ubiquitin-protein ligases (E3s). This gene encodes a member of the E2 ubiquitin-conjugating enzyme family. This enzyme is highly similar in primary structure to the enzyme encoded by UBE2L3 gene. Two alternatively spliced transcript variants encoding distinct isoforms have been found for this gene. [provided by RefSeq]

**Other Designations** retinoic acid induced gene B protein|ubiquitin carrier protein|ubiquitin-protein ligase

## Pathway

- [Ubiquitin mediated proteolysis](#)