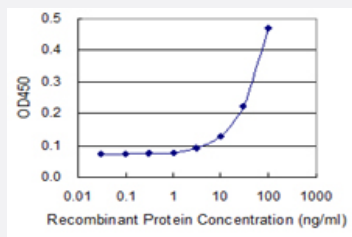


# NOG monoclonal antibody (M02), clone 3A2

Catalog # H00009241-M02

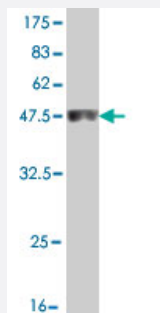
Size 100 ug

## Applications



### Sandwich ELISA (Recombinant protein)

Detection limit for recombinant GST tagged NOG is 3 ng/ml as a capture antibody.



Western Blot detection against Immunogen (48.29 KDa) .

## Specification

### Product Description

Mouse monoclonal antibody raised against a full length recombinant NOG.

### Immunogen

NOG (AAH34027, 28 a.a. ~ 232 a.a) full-length recombinant protein with GST tag. MW of the GST tag alone is 26 KDa.

### Sequence

QHYLHIRPAPSDNLPLVDLIEHPDPIFDPKEDLNETLLRSLGPHYDPGFMATSPPEDRPGGGGG  
AAGGAEDLAELDQLLRQRPSPGAMPSEIKGLEFSEGLAQGKKQRLSKKLRRKLQMWLWSQTFCP  
VLYAWNDLGSRFWPRYVKVGCFSKRSCSVPEGMVCKPSKSVHLTVLRWRCQRRGGQRCGWI  
PIQYPISECKCSC

### Host

Mouse

### Reactivity

Human

Interspecies Antigen Sequence	Mouse (99); Rat (99)
Isotype	IgG2a Kappa
Quality Control Testing	Antibody Reactive Against Recombinant Protein. Western Blot detection against Immunogen (48.29 KDa) .
Storage Buffer	In 1x PBS, pH 7.4
Storage Instruction	Store at -20°C or lower. Aliquot to avoid repeated freezing and thawing.

## Applications

- Western Blot (Recombinant protein)

[Protocol Download](#)

- Sandwich ELISA (Recombinant protein)

Detection limit for recombinant GST tagged NOG is 3 ng/ml as a capture antibody.

[Protocol Download](#)

- ELISA

## Gene Info — NOG

Entrez GeneID	<a href="#">9241</a>
GeneBank Accession#	<a href="#">BC034027</a>
Protein Accession#	<a href="#">AAH34027</a>
Gene Name	NOG
Gene Alias	SYM1, SYNS1
Gene Description	noggin
Omim ID	<a href="#">184460</a> <a href="#">185800</a> <a href="#">186500</a> <a href="#">186570</a> <a href="#">602991</a>
Gene Ontology	<a href="#">Hyperlink</a>

**Gene Summary**

The secreted polypeptide, encoded by this gene, binds and inactivates members of the transforming growth factor-beta (TGF-beta) superfamily signaling proteins, such as bone morphogenetic protein-4 (BMP4). By diffusing through extracellular matrices more efficiently than members of the TGF-beta superfamily, this protein may have a principal role in creating morphogenic gradients. The protein appears to have pleiotropic effect, both early in development as well as in later stages. It was originally isolated from *Xenopus* based on its ability to restore normal dorsal-ventral body axis in embryos that had been artificially ventralized by UV treatment. The results of the mouse knock out of the ortholog suggest that it is involved in numerous developmental processes, such as neural tube fusion and joint formation. Recently, several dominant human NOG mutations in unrelated families with proximal symphalangism (SYM1) and multiple synostoses syndrome (SYNS1) were identified; both SYM1 and SYNS1 have multiple joint fusion as their principal feature, and map to the same region (17q22) as this gene. All of these mutations altered evolutionarily conserved amino acid residues. The amino acid sequence of this human gene is highly homologous to that of *Xenopus*, rat and mouse. [provided by RefSeq]

**Other Designations**

symphalangism 1 (proximal)

**Pathway**

- [TGF-beta signaling pathway](#)

**Disease**

- [Diabetes Mellitus](#)
- [Genetic Predisposition to Disease](#)
- [Neural Tube Defects](#)
- [Obesity](#)
- [Osteoporosis](#)
- [Ovarian Failure](#)
- [Polycystic Ovary Syndrome](#)
- [Puberty](#)
- [Thrombophilia](#)
- [Tobacco Use Disorder](#)