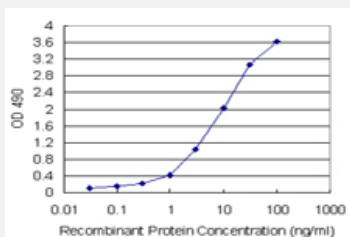


PNMA1 (Human) Matched Antibody Pair

Catalog # H00009240-AP11

Size 1 Set

Applications



Sandwich ELISA detection sensitivity ranging from 0.1 ng/ml to 100 ng/ml.

Specification

Product Description	This antibody pair set comes with a matched antibody pair to detect and quantify the protein level of human PNMA1.
Reactivity	Human
Interspecies Antigen Sequence	Mouse (92); Rat (93)
Quality Control Testing	Standard curve using recombinant protein (H00009240-P01) as an analyte. Sandwich ELISA detection sensitivity ranging from 0.1 ng/ml to 100 ng/ml.
Supplied Product	Antibody pair set content: 1. Capture antibody: rabbit MaxPab® affinity purified polyclonal anti-PNMA1 (100 ug) 2. Detection antibody: mouse monoclonal anti-PNMA1, IgG2a Kappa (20 ug) *Reagents are sufficient for at least 1-2 x 96 well plates using recommended protocols.
Storage Instruction	Store reagents of the antibody pair set at -20°C or lower. Please aliquot to avoid repeated freeze thaw cycle. Reagents should be returned to -20°C storage immediately after use.

Applications

- ELISA Pair (Recombinant protein)

[Protocol Download](#)

Gene Info — PNMA1

Entrez GeneID	9240
Gene Name	PNMA1
Gene Alias	MA1
Gene Description	paraneoplastic antigen MA1
Omim ID	604010
Gene Ontology	Hyperlink
Other Designations	neuron- and testis-specific protein 1 paraneoplastic neuronal antigen MA1