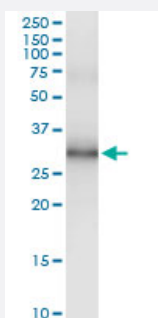


IL32 (Human) IP-WB Antibody Pair

Catalog # H00009235-PW1

Size 1 Set

Applications



Immunoprecipitation of IL32 transfected lysate using rabbit polyclonal anti-IL32 and Protein A Magnetic Bead ([U0007](#)), and immunoblotted with mouse polyclonal anti-IL32.

Specification

Product Description

This IP-WB antibody pair set comes with one antibody for immunoprecipitation and another to detect the precipitated protein in western blot.

Reactivity

Human

Quality Control Testing

Immunoprecipitation-Western Blot (IP-WB)
Immunoprecipitation of IL32 transfected lysate using rabbit polyclonal anti-IL32 and Protein A Magnetic Bead ([U0007](#)), and immunoblotted with mouse polyclonal anti-IL32.

Supplied Product

Antibody pair set content:
1. Antibody pair for IP: rabbit polyclonal anti-IL32 (300 ul)
2. Antibody pair for WB: mouse polyclonal anti-IL32 (50 ul)

Storage Instruction

Store reagents of the antibody pair set at -20°C or lower. Please aliquot to avoid repeated freeze thaw cycle. Reagents should be returned to -20°C storage immediately after use.

Applications

- Immunoprecipitation-Western Blot

[Protocol Download](#)

Gene Info — IL32

Entrez GeneID [9235](#)**Gene Name** IL32**Gene Alias** IL-32alpha, IL-32beta, IL-32delta, IL-32gamma, NK4, TAIF, TAIFa, TAIFb, TAIFc, TAIFd**Gene Description** interleukin 32**Omim ID** [606001](#)**Gene Ontology** [Hyperlink](#)

Gene Summary This gene encodes a member of the cytokine family. The protein contains a tyrosine sulfation site, 3 potential N-myristoylation sites, multiple putative phosphorylation sites, and an RGD cell-attachment sequence. Expression of this protein is increased after the activation of T-cells by mitogens or the activation of NK cells by IL-2. This protein induces the production of TNFalpha from macrophage cells. Alternate transcriptional splice variants, encoding different isoforms, have been characterized. [provided by RefSeq]

Other Designations natural killer cell transcript 4|natural killer cells protein 4|tumor necrosis factor alpha-inducing factor