

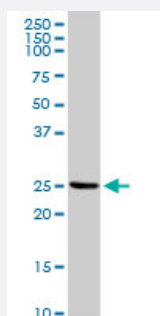
MaxPab®

IL32 MaxPab rabbit polyclonal antibody (D01)

Catalog # H00009235-D01

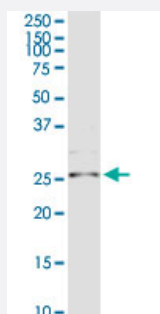
Size 100 uL

Applications



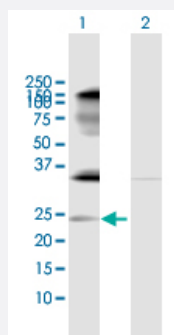
Western Blot (Tissue lysate)

IL32 MaxPab rabbit polyclonal antibody. Western Blot analysis of IL32 expression in human spleen.



Western Blot (Tissue lysate)

IL32 MaxPab rabbit polyclonal antibody. Western Blot analysis of IL32 expression in mouse lung.

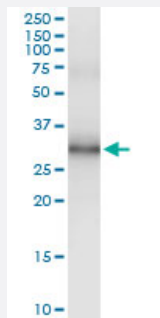


Western Blot (Transfected lysate)

Western Blot analysis of IL32 expression in transfected 293T cell line ([H00009235-T02](#)) by IL32 MaxPab polyclonal antibody.

Lane 1: IL32 transfected lysate(21.7 KDa).

Lane 2: Non-transfected lysate.



Immunoprecipitation

Immunoprecipitation of IL32 transfected lysate using anti-IL32 MaxPab rabbit polyclonal antibody and Protein A Magnetic Bead, and immunoblotted with IL32 MaxPab mouse polyclonal antibody (B01) ([H00009235-B01](#)).

Specification

| | |
|--------------------------------|---|
| Product Description | Rabbit polyclonal antibody raised against a full-length human IL32 protein. |
| Immunogen | IL32 (NP_001012649.1, 1 a.a. ~ 188 a.a) full-length human protein. |
| Sequence | MCFPKVLSDDMKKLKARMHQAIFRYDKMQNAESGRGQVMSSSLAELEDDFKEGYLETVAAAYE EQHPELTPLLEKERDGLRCRGNRSPVPDVEDPATEEPGESFCDKVMRWFQAMLQRLQTWWHG VLAWVKEKVVALVHAVQALWKQFQSFCCSLSELFMSFQSYGAPRGDKEELTPQKCSEPPSS K |
| Host | Rabbit |
| Reactivity | Human, Mouse |
| Quality Control Testing | Antibody reactive against mammalian transfected lysate. |
| Storage Buffer | No additive |
| Storage Instruction | Store at -20°C or lower. Aliquot to avoid repeated freezing and thawing. |

Applications

- Western Blot (Tissue lysate)

IL32 MaxPab rabbit polyclonal antibody. Western Blot analysis of IL32 expression in human spleen.

[Protocol Download](#)

- Western Blot (Tissue lysate)

IL32 MaxPab rabbit polyclonal antibody. Western Blot analysis of IL32 expression in mouse lung.

[Protocol Download](#)

- Western Blot (Transfected lysate)

Western Blot analysis of IL32 expression in transfected 293T cell line ([H00009235-T02](#)) by IL32 MaxPab polyclonal antibody.

Lane 1: IL32 transfected lysate(21.7 KDa).

Lane 2: Non-transfected lysate.

[Protocol Download](#)

- Immunoprecipitation

Immunoprecipitation of IL32 transfected lysate using anti-IL32 MaxPab rabbit polyclonal antibody and Protein A Magnetic Bead, and immunoblotted with IL32 MaxPab mouse polyclonal antibody (B01) ([H00009235-B01](#)).

[Protocol Download](#)

Gene Info — IL32

Entrez GeneID [9235](#)

GeneBank Accession# [NM_001012631](#)

Protein Accession# [NP_001012649.1](#)

Gene Name IL32

Gene Alias IL-32alpha, IL-32beta, IL-32delta, IL-32gamma, NK4, TAIF, TAIFa, TAIFb, TAIFc, TAIFd

Gene Description interleukin 32

Omim ID [606001](#)

Gene Ontology [Hyperlink](#)

Gene Summary This gene encodes a member of the cytokine family. The protein contains a tyrosine sulfation site, 3 potential N-myristoylation sites, multiple putative phosphorylation sites, and an RGD cell-attachment sequence. Expression of this protein is increased after the activation of T-cells by mitogens or the activation of NK cells by IL-2. This protein induces the production of TNFalpha from macrophage cells. Alternate transcriptional splice variants, encoding different isoforms, have been characterized. [provided by RefSeq]

Other Designations natural killer cell transcript 4|natural killer cells protein 4|tumor necrosis factor alpha-inducing factor