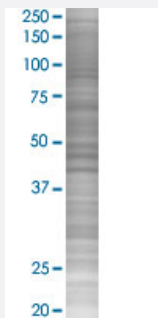


PTTG1 293T Cell Transient Overexpression Lysate(Denatured)

Catalog # H00009232-T04

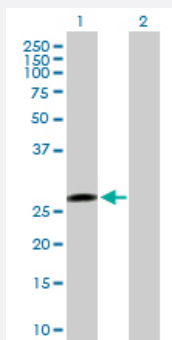
Size 100 uL

Applications



SDS-PAGE Gel

PTTG1 transfected lysate.



Western Blot

Lane 1: PTTG1 transfected lysate (22.00 kDa)

Lane 2: Non-transfected lysate.

Specification

Transfected Cell Line	293T
Plasmid	pCMV-PTTG1 full-length fragment
Host	Human
Theoretical MW (kDa)	22
Interspecies Antigen Sequence	Mouse (71); Rat (71)

Quality Control Testing

Transient overexpression cell lysate was tested with Anti-PTTG1 antibody ([H00009232-B02P](#)) by Western Blots.
SDS-PAGE Gel
PTTG1 transfected lysate.
Western Blot
Lane 1: PTTG1 transfected lysate (22.00 KDa)
Lane 2: Non-transfected lysate.

Storage Buffer

1X Sample Buffer (50 mM Tris-HCl, 2% SDS, 10% glycerol, 300 mM 2-mercaptoethanol, 0.01% Bromophenol blue)

Storage Instruction

Store at -80°C. Aliquot to avoid repeated freezing and thawing.

Applications

- Western Blot

Gene Info — PTTG1

Entrez GeneID[9232](#)**GeneBank Accession#**[NM_004219.2](#)**Protein Accession#**[NP_004210.1](#)**Gene Name**

PTTG1

Gene Alias

EAP1, HPTTG, MGC126883, MGC138276, PTTG, TUTR1

Gene Description

pituitary tumor-transforming 1

Omim ID[604147](#)**Gene Ontology**[Hyperlink](#)**Gene Summary**

The encoded protein is a homolog of yeast securin proteins, which prevent separins from promoting sister chromatid separation. It is an anaphase-promoting complex (APC) substrate that associates with a separin until activation of the APC. The gene product has transforming activity in vitro and tumorigenic activity in vivo, and the gene is highly expressed in various tumors. The gene product contains 2 PXXP motifs, which are required for its transforming and tumorigenic activities, as well as for its stimulation of basic fibroblast growth factor expression. It also contains a destruction box (D box) that is required for its degradation by the APC. The acidic C-terminal region of the encoded protein can act as a transactivation domain. The gene product is mainly a cytosolic protein, although it partially localizes in the nucleus. [provided by RefSeq]

Other Designations

ESP1-associated protein 1|OTTHUMP00000160845|pituitary tumor-transforming protein 1|securin|tumor-transforming protein 1

Pathway

- [Cell cycle](#)

Disease

- [Breast cancer](#)
- [Breast Neoplasms](#)
- [Carcinoma](#)
- [Chromosomal Instability](#)
- [Genetic Predisposition to Disease](#)
- [Narcolepsy](#)
- [Ovarian Neoplasms](#)
- [Psoriasis](#)