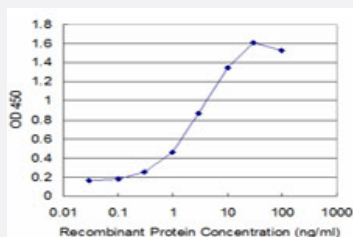


# PTTG1 monoclonal antibody (M35), clone 2C3

Catalog # H00009232-M35

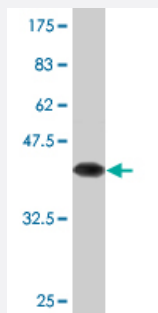
Size 100 ug

## Applications



### Sandwich ELISA (Recombinant protein)

Detection limit for recombinant GST tagged PTTG1 is approximately 0.03ng/ml as a capture antibody.



Western Blot detection against Immunogen (36.74 KDa) .

## Specification

### Product Description

Mouse monoclonal antibody raised against a partial recombinant PTTG1.

### Immunogen

PTTG1 (NP\_004210, 1 a.a. ~ 100 a.a) partial recombinant protein with GST tag. MW of the GST tag alone is 26 KDa.

### Sequence

MATLIYVDKENGEPTGTRVVAKDGLKLGSGPSIKALDGRSQVSTPRFGKTFDAPPALPKATRKALG  
TVNRATEKSVKTKGPLKQKQPSFSAKKMTEKTVKA

### Host

Mouse

### Reactivity

Human

Interspecies Antigen Sequence	Mouse (71); Rat (71)
Isotype	IgG2b Kappa
Quality Control Testing	Antibody Reactive Against Recombinant Protein. Western Blot detection against Immunogen (36.74 KDa) .
Storage Buffer	In 1x PBS, pH 7.4
Storage Instruction	Store at -20°C or lower. Aliquot to avoid repeated freezing and thawing.

## Applications

- Western Blot (Recombinant protein)

[Protocol Download](#)

- Sandwich ELISA (Recombinant protein)

Detection limit for recombinant GST tagged PTTG1 is approximately 0.03ng/ml as a capture antibody.

[Protocol Download](#)

- ELISA

## Gene Info — PTTG1

Entrez GeneID	<a href="#">9232</a>
GeneBank Accession#	<a href="#">NM_004219</a>
Protein Accession#	<a href="#">NP_004210</a>
Gene Name	PTTG1
Gene Alias	EAP1, HPTTG, MGC126883, MGC138276, PTTG, TUTR1
Gene Description	pituitary tumor-transforming 1
Omim ID	<a href="#">604147</a>
Gene Ontology	<a href="#">Hyperlink</a>

**Gene Summary**

The encoded protein is a homolog of yeast securin proteins, which prevent separins from promoting sister chromatid separation. It is an anaphase-promoting complex (APC) substrate that associates with a separin until activation of the APC. The gene product has transforming activity in vitro and tumorigenic activity in vivo, and the gene is highly expressed in various tumors. The gene product contains 2 PXXP motifs, which are required for its transforming and tumorigenic activities, as well as for its stimulation of basic fibroblast growth factor expression. It also contains a destruction box (D box) that is required for its degradation by the APC. The acidic C-terminal region of the encoded protein can act as a transactivation domain. The gene product is mainly a cytosolic protein, although it partially localizes in the nucleus. [provided by RefSeq]

**Other Designations**

ESP1-associated protein 1|OTTHUMP00000160845|pituitary tumor-transforming protein 1|securin|tumor-transforming protein 1

**Pathway**

- [Cell cycle](#)

**Disease**

- [Breast cancer](#)
- [Breast Neoplasms](#)
- [Carcinoma](#)
- [Chromosomal Instability](#)
- [Genetic Predisposition to Disease](#)
- [Narcolepsy](#)
- [Ovarian Neoplasms](#)
- [Psoriasis](#)