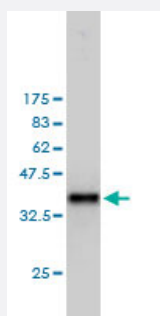


# PTTG1 monoclonal antibody (M01), clone 1D9

Catalog # H00009232-M01

Size 100 ug

## Applications



Western Blot detection against Immunogen (36.74 KDa) .

## Specification

<b>Product Description</b>	Mouse monoclonal antibody raised against a partial recombinant PTTG1.
<b>Immunogen</b>	PTTG1 (NP_004210, 1 a.a. ~ 100 a.a) partial recombinant protein with GST tag. MW of the GST tag alone is 26 KDa.
<b>Sequence</b>	MATLIYVDKENGEPGTRVVAKDGLKLGSGPSIKALDGRSQVSTPRFGKTFDAPPALPKATRKALG TVNRATEKSVKTKGPLKQKQPSFSAKKMTEKTVKA
<b>Host</b>	Mouse
<b>Reactivity</b>	Human
<b>Interspecies Antigen Sequence</b>	Mouse (71); Rat (71)
<b>Isotype</b>	IgG1 Kappa
<b>Quality Control Testing</b>	Antibody Reactive Against Recombinant Protein. Western Blot detection against Immunogen (36.74 KDa) .
<b>Storage Buffer</b>	In 1x PBS, pH 7.4
<b>Storage Instruction</b>	Store at -20°C or lower. Aliquot to avoid repeated freezing and thawing.

## Applications

- Western Blot (Recombinant protein)

[Protocol Download](#)

- ELISA

## Gene Info — PTTG1

Entrez GeneID	<a href="#">9232</a>
GeneBank Accession#	<a href="#">NM_004219</a>
Protein Accession#	<a href="#">NP_004210</a>
Gene Name	PTTG1
Gene Alias	EAP1, HPTTG, MGC126883, MGC138276, PTTG, TUTR1
Gene Description	pituitary tumor-transforming 1
Omim ID	<a href="#">604147</a>
Gene Ontology	<a href="#">Hyperlink</a>
Gene Summary	The encoded protein is a homolog of yeast securin proteins, which prevent separins from promoting sister chromatid separation. It is an anaphase-promoting complex (APC) substrate that associates with a separin until activation of the APC. The gene product has transforming activity in vitro and tumorigenic activity in vivo, and the gene is highly expressed in various tumors. The gene product contains 2 PXXP motifs, which are required for its transforming and tumorigenic activities, as well as for its stimulation of basic fibroblast growth factor expression. It also contains a destruction box (D box) that is required for its degradation by the APC. The acidic C-terminal region of the encoded protein can act as a transactivation domain. The gene product is mainly a cytosolic protein, although it partially localizes in the nucleus. [provided by RefSeq]
Other Designations	ESP1-associated protein 1 OTTHUMP00000160845 pituitary tumor-transforming protein 1 securin tumor-transforming protein 1

## Pathway

- [Cell cycle](#)

## Disease

- [Breast cancer](#)
- [Breast Neoplasms](#)
- [Carcinoma](#)
- [Chromosomal Instability](#)
- [Genetic Predisposition to Disease](#)
- [Narcolepsy](#)
- [Ovarian Neoplasms](#)
- [Psoriasis](#)