

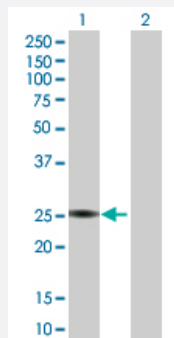
MaxPab®

PTTG1 purified MaxPab rabbit polyclonal antibody (D02P)

Catalog # H00009232-D02P

Size 100 ug

Applications



Western Blot (Transfected lysate)

Western Blot analysis of PTTG1 expression in transfected 293T cell line ([H00009232-T04](#)) by PTTG1 MaxPab polyclonal antibody.

Lane 1: PTTG1 transfected lysate(22.00 KDa).

Lane 2: Non-transfected lysate.

Specification

Product Description	Rabbit polyclonal antibody raised against a full-length human PTTG1 protein.
Immunogen	PTTG1 (NP_004210.1, 1 a.a. ~ 202 a.a) full-length human protein.
Sequence	MATLIYVDKENGEPGTRVVAKDGLKLGSGPSIKALDGRSQVSTPRFGKTFDAPPALPKATRKALG TVNRATEKS VKTKG PLKQKQPSFS AKKMTEKTVKAKSSVPASDDAYPEIEKFFPFNPLDFESFDL PEEHQIAHLPLSGVPLMILDEERELEKLFQLGPPSPVKMPSPPWESNLLQSPSSILSTLDVELPPV CCDIDI
Host	Rabbit
Reactivity	Human
Interspecies Antigen Sequence	Mouse (71); Rat (71)
Quality Control Testing	Antibody reactive against mammalian transfected lysate.
Storage Buffer	In 1x PBS, pH 7.4
Storage Instruction	Store at -20°C or lower. Aliquot to avoid repeated freezing and thawing.

Applications

- Western Blot (Transfected lysate)

Western Blot analysis of PTTG1 expression in transfected 293T cell line ([H00009232-T04](#)) by PTTG1 MaxPab polyclonal antibody.

Lane 1: PTTG1 transfected lysate(22.00 KDa).

Lane 2: Non-transfected lysate.

[Protocol Download](#)

Gene Info — PTTG1

Entrez GeneID [9232](#)

GeneBank Accession# [NM_004219.2](#)

Protein Accession# [NP_004210.1](#)

Gene Name PTTG1

Gene Alias EAP1, HPTTG, MGC126883, MGC138276, PTTG, TUTR1

Gene Description pituitary tumor-transforming 1

Omim ID [604147](#)

Gene Ontology [Hyperlink](#)

Gene Summary

The encoded protein is a homolog of yeast securin proteins, which prevent separins from promoting sister chromatid separation. It is an anaphase-promoting complex (APC) substrate that associates with a separin until activation of the APC. The gene product has transforming activity in vitro and tumorigenic activity in vivo, and the gene is highly expressed in various tumors. The gene product contains 2 PXXP motifs, which are required for its transforming and tumorigenic activities, as well as for its stimulation of basic fibroblast growth factor expression. It also contains a destruction box (D box) that is required for its degradation by the APC. The acidic C-terminal region of the encoded protein can act as a transactivation domain. The gene product is mainly a cytosolic protein, although it partially localizes in the nucleus. [provided by RefSeq]

Other Designations

ESP1-associated protein 1|OTTHUMP00000160845|pituitary tumor-transforming protein 1|securin|tumor-transforming protein 1

Pathway

- [Cell cycle](#)

Disease

- [Breast cancer](#)
- [Breast Neoplasms](#)
- [Carcinoma](#)
- [Chromosomal Instability](#)
- [Genetic Predisposition to Disease](#)
- [Narcolepsy](#)
- [Ovarian Neoplasms](#)
- [Psoriasis](#)