

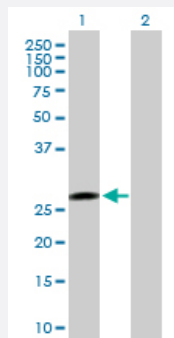
MaxPab®

PTTG1 purified MaxPab mouse polyclonal antibody (B02P)

Catalog # H00009232-B02P

Size 50 ug

Applications

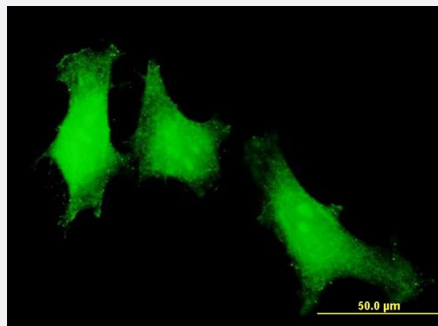


Western Blot (Transfected lysate)

Western Blot analysis of PTTG1 expression in transfected 293T cell line ([H00009232-T04](#)) by PTTG1 MaxPab polyclonal antibody.

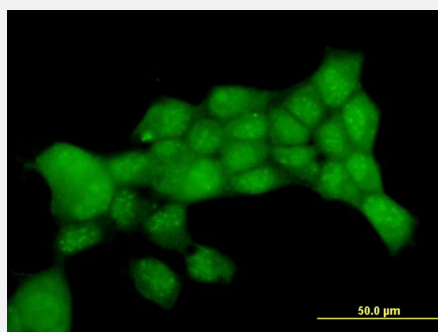
Lane 1: PTTG1 transfected lysate (22.00 KDa).

Lane 2: Non-transfected lysate.



Immunofluorescence

Immunofluorescence of purified MaxPab antibody to PTTG1 on HeLa cell. [antibody concentration 10 ug/ml]



Immunofluorescence

Immunofluorescence of purified MaxPab antibody to PTTG1 on 293T cell. [antibody concentration 1 ug/ml]

Specification

Product Description

Mouse polyclonal antibody raised against a full-length human PTTG1 protein.

| | |
|-------------------------------|---|
| Immunogen | PTTG1 (NP_004210.1, 1 a.a. ~ 202 a.a) full-length human protein. |
| Sequence | MATLIYVDKENGEPGTRVVAKDGLKLGSGPSIKALDGRSQVSTPRFGKTFDAPPALPKATRKALG TVNRATEKSVKTKGPKLKQKQPSFSAKKMTEKTVKAKSSVPASDDAYPEIEKFFPFNPLDFESFDL PEEHQIAHLPLSGVPLMILDEERELEKLFQLGPPSPVKMPSPPWESNLLQSPSSILSTLDVELPPV CCDIDI |
| Host | Mouse |
| Reactivity | Human |
| Interspecies Antigen Sequence | Mouse (71); Rat (71) |
| Quality Control Testing | Antibody reactive against mammalian transfected lysate. |
| Storage Buffer | In 1x PBS, pH 7.4 |
| Storage Instruction | Store at -20°C or lower. Aliquot to avoid repeated freezing and thawing. |

Applications

- Western Blot (Transfected lysate)

Western Blot analysis of PTTG1 expression in transfected 293T cell line ([H00009232-T04](#)) by PTTG1 MaxPab polyclonal antibody.

Lane 1: PTTG1 transfected lysate(22.00 KDa).

Lane 2: Non-transfected lysate.

[Protocol Download](#)

- Immunofluorescence

Immunofluorescence of purified MaxPab antibody to PTTG1 on HeLa cell. [antibody concentration 10 ug/ml]

- Immunofluorescence

Immunofluorescence of purified MaxPab antibody to PTTG1 on 293T cell. [antibody concentration 1 ug/ml]

Gene Info — PTTG1

| | |
|---------------------|-----------------------------|
| Entrez GeneID | 9232 |
| GeneBank Accession# | NM_004219.2 |
| Protein Accession# | NP_004210.1 |

| | |
|--------------------|--|
| Gene Name | PTTG1 |
| Gene Alias | EAP1, HPTTG, MGC126883, MGC138276, PTTG, TUTR1 |
| Gene Description | pituitary tumor-transforming 1 |
| Omim ID | 604147 |
| Gene Ontology | Hyperlink |
| Gene Summary | The encoded protein is a homolog of yeast securin proteins, which prevent separins from promoting sister chromatid separation. It is an anaphase-promoting complex (APC) substrate that associates with a separin until activation of the APC. The gene product has transforming activity in vitro and tumorigenic activity in vivo, and the gene is highly expressed in various tumors. The gene product contains 2 PXXP motifs, which are required for its transforming and tumorigenic activities, as well as for its stimulation of basic fibroblast growth factor expression. It also contains a destruction box (D box) that is required for its degradation by the APC. The acidic C-terminal region of the encoded protein can act as a transactivation domain. The gene product is mainly a cytosolic protein, although it partially localizes in the nucleus. [provided by RefSeq] |
| Other Designations | ESP1-associated protein 1 OTTHUMP00000160845 pituitary tumor-transforming protein 1 securin tumor-transforming protein 1 |

Pathway

- [Cell cycle](#)

Disease

- [Breast cancer](#)
- [Breast Neoplasms](#)
- [Carcinoma](#)
- [Chromosomal Instability](#)
- [Genetic Predisposition to Disease](#)
- [Narcolepsy](#)
- [Ovarian Neoplasms](#)
- [Psoriasis](#)