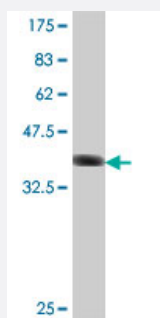


# MAGI1 polyclonal antibody (A01)

Catalog # H00009223-A01

Size 50 uL

## Applications



Western Blot detection against Immunogen (37 KDa) .

## Specification

<b>Product Description</b>	Mouse polyclonal antibody raised against a partial recombinant MAGI1.
<b>Immunogen</b>	MAGI1 (NP_004733, 761 a.a. ~ 859 a.a) partial recombinant protein with GST tag.
<b>Sequence</b>	SHSTQVLPEFPPAEAQAPDQTDSSGQKKPDPFKWAQSRSMYENRPMSPSPASGLSKGERERE INSTNFGECPIPDYQEQDIFLWRKETGFGFRILGGN
<b>Host</b>	Mouse
<b>Reactivity</b>	Human
<b>Interspecies Antigen Sequence</b>	Mouse (94); Rat (95)
<b>Quality Control Testing</b>	Antibody Reactive Against Recombinant Protein. Western Blot detection against Immunogen (37 KDa) .
<b>Storage Buffer</b>	50 % glycerol
<b>Storage Instruction</b>	Store at -20°C or lower. Aliquot to avoid repeated freezing and thawing.

## Applications

- Western Blot (Recombinant protein)

[Protocol Download](#)

- ELISA

## Gene Info — MAGI1

Entrez GeneID [9223](#)

GeneBank Accession# [NM\\_004742](#)

Protein Accession# [NP\\_004733](#)

Gene Name MAGI1

Gene Alias AIP3, BAIAP1, BAP1, MAGI-1, TNRC19, WWP3

Gene Description membrane associated guanylate kinase, WW and PDZ domain containing 1

Omim ID [602625](#)

Gene Ontology [Hyperlink](#)

**Gene Summary** The protein encoded by this gene is a member of the membrane-associated guanylate kinase homologue (MAGUK) family. MAGUK proteins participate in the assembly of multiprotein complexes on the inner surface of the plasma membrane at regions of cell-cell contact. The product of this gene may play a role as scaffolding protein at cell-cell junctions. Alternatively spliced transcript variants encoding different isoforms have been identified. [provided by RefSeq]

**Other Designations** BAI1-associated protein 1|WW domain-containing protein 3|atrophin-1 interacting protein 3|membrane associated guanylate kinase inverted-1|trinucleotide repeat-containing gene 19

## Pathway

- [Tight junction](#)

## Disease

- [Genetic Predisposition to Disease](#)
- [Tobacco Use Disorder](#)