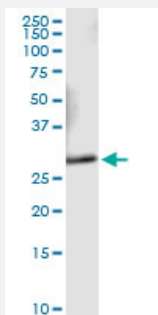


VAPA (Human) IP-WB Antibody Pair

Catalog # H00009218-PW1

Size 1 Set

Applications



Immunoprecipitation of VAPA transfected lysate using rabbit polyclonal anti-VAPA and Protein A Magnetic Bead ([U0007](#)), and immunoblotted with mouse purified polyclonal anti-VAPA.

Specification

Product Description	This IP-WB antibody pair set comes with one antibody for immunoprecipitation and another to detect the precipitated protein in western blot.
Reactivity	Human
Interspecies Antigen Sequence	Mouse (97); Rat (96)
Quality Control Testing	Immunoprecipitation-Western Blot (IP-WB) Immunoprecipitation of VAPA transfected lysate using rabbit polyclonal anti-VAPA and Protein A Magnetic Bead (U0007), and immunoblotted with mouse purified polyclonal anti-VAPA.
Supplied Product	Antibody pair set content: 1. Antibody pair for IP: rabbit polyclonal anti-VAPA (300 ul) 2. Antibody pair for WB: mouse purified polyclonal anti-VAPA (50 ug)
Storage Instruction	Store reagents of the antibody pair set at -20°C or lower. Please aliquot to avoid repeated freeze thaw cycle. Reagents should be returned to -20°C storage immediately after use.

Applications

- Immunoprecipitation-Western Blot

[Protocol Download](#)

Gene Info — VAPA

Entrez GeneID [9218](#)

Gene Name VAPA

Gene Alias MGC3745, VAP-33, VAP-A, VAP33, hVAP-33

Gene Description VAMP (vesicle-associated membrane protein)-associated protein A, 33kDa

Omim ID [605703](#)

Gene Ontology [Hyperlink](#)

Gene Summary The protein encoded by this gene is a type IV membrane protein. It is present in the plasma membrane and intracellular vesicles. It may also be associated with the cytoskeleton. This protein may function in vesicle trafficking, membrane fusion, protein complex assembly and cell motility. Alternative splicing occurs at this locus and two transcript variants encoding distinct isoforms have been identified. [provided by RefSeq]

Other Designations VAMP (vesicle-associated membrane protein)-associated protein A (33kD)|vesicle-associated membrane protein-associated protein A

Pathway

- [Tight junction](#)

Disease

- [Bipolar Disorder](#)
- [Genetic Predisposition to Disease](#)