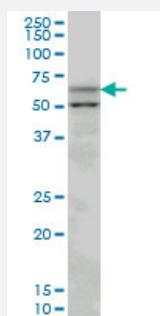


SLC33A1 monoclonal antibody (M07), clone 3A4

Catalog # H00009197-M07

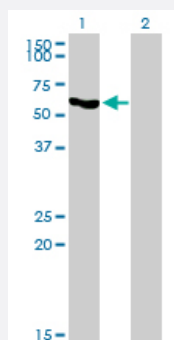
Size 100 ug

Applications



Western Blot (Cell lysate)

SLC33A1 monoclonal antibody (M07), clone 3A4 Western Blot analysis of SLC33A1 expression in PC-12 (Cat # L012V1).

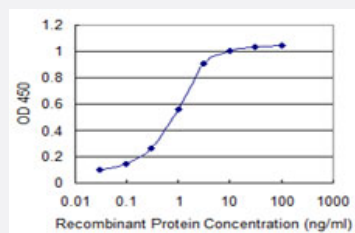


Western Blot (Transfected lysate)

Western Blot analysis of SLC33A1 expression in transfected 293T cell line by SLC33A1 monoclonal antibody (M07), clone 3A4.

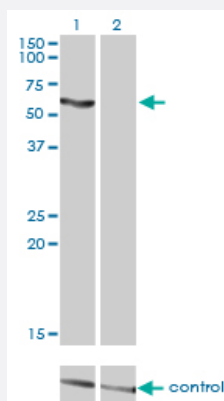
Lane 1: SLC33A1 transfected lysate(60.9 KDa).

Lane 2: Non-transfected lysate.



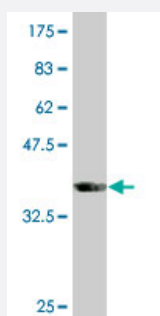
Sandwich ELISA (Recombinant protein)

Detection limit for recombinant GST tagged SLC33A1 is 0.03 ng/ml as a capture antibody.



RNAi Knockdown (Antibody validated)

Western blot analysis of SLC33A1 over-expressed 293 cell line, cotransfected with SLC33A1 Validated Chimera RNAi (Cat # H00009197-R01V) (Lane 2) or non-transfected control (Lane 1). Blot probed with SLC33A1 monoclonal antibody (M07), clone 3A4 (Cat # H00009197-M07). GAPDH (36.1 kDa) used as specificity and loading control.



Western Blot detection against Immunogen (33.33 KDa) .

Specification

Product Description	Mouse monoclonal antibody raised against a partial recombinant SLC33A1.
Immunogen	SLC33A1 (NP_004724, 1 a.a. ~ 69 a.a) partial recombinant protein with GST tag. MW of the GST tag alone is 26 KDa.
Sequence	MSPTISHKDSSRQRRPGNFSHSLDMKSGPLPPGGWDDSHLDSAGREGDREALLGDTGTGDFLKAPQSFR
Host	Mouse
Reactivity	Human, Rat
Isotype	IgG2a Kappa
Quality Control Testing	Antibody Reactive Against Recombinant Protein. Western Blot detection against Immunogen (33.33 KDa) .
Storage Buffer	In 1x PBS, pH 7.4
Storage Instruction	Store at -20°C or lower. Aliquot to avoid repeated freezing and thawing.

Applications

- Western Blot (Cell lysate)

SLC33A1 monoclonal antibody (M07), clone 3A4 Western Blot analysis of SLC33A1 expression in PC-12 (Cat # L012V1).

[Protocol Download](#)

- Western Blot (Transfected lysate)

Western Blot analysis of SLC33A1 expression in transfected 293T cell line by SLC33A1 monoclonal antibody (M07), clone 3A4.

Lane 1: SLC33A1 transfected lysate(60.9 KDa).

Lane 2: Non-transfected lysate.

[Protocol Download](#)

- Western Blot (Recombinant protein)

[Protocol Download](#)

- Sandwich ELISA (Recombinant protein)

Detection limit for recombinant GST tagged SLC33A1 is 0.03 ng/ml as a capture antibody.

[Protocol Download](#)

- ELISA

- RNAi Knockdown (Antibody validated)

Western blot analysis of SLC33A1 over-expressed 293 cell line, cotransfected with SLC33A1 Validated Chimera RNAi (Cat # H00009197-R01V) (Lane 2) or non-transfected control (Lane 1). Blot probed with SLC33A1 monoclonal antibody (M07), clone 3A4 (Cat # H00009197-M07). GAPDH (36.1 kDa) used as specificity and loading control.

[Protocol Download](#)

Gene Info — SLC33A1

Entrez GeneID [9197](#)

GeneBank Accession# [NM_004733](#)

Protein Accession# [NP_004724](#)

Gene Name SLC33A1

Gene Alias	ACATN, AT-1, AT1, SPG42
Gene Description	solute carrier family 33 (acetyl-CoA transporter), member 1
Omim ID	603690
Gene Ontology	Hyperlink
Gene Summary	The encoded protein is required for the formation of O-acetylated (Ac) gangliosides. It is predicted to contain 6 to 10 transmembrane domains, and a leucine zipper motif in transmembrane domain III. Studies indicate that the protein is localized to the cytoplasm. [provided by RefSeq]
Other Designations	acetyl-Coenzyme A transporter acetyl-coenzyme A transporter spastic paraplegia 42 (autosomal dominant)

Publication Reference

- [SLC33A1/AT-1 protein regulates the induction of autophagy downstream of IRE1/XBP1 pathway.](#)

Pehar M, Jonas MC, Hare TM, Puglielli L.

The Journal of Biological Chemistry 2012 Aug; 287(35):29921.

Application: IEM, IF, WB, Human, H4 cells

- [AT-1 is the ER membrane acetyl-CoA transporter and is essential for cell viability.](#)

Jonas MC, Pehar M, Puglielli L.

Journal of Cell Science 2010 Oct; 123(Pt 19):3378.

Application: WB-Ce, WB-Tr, Human, Mouse, CHO, H4 cells

Pathway

- [Glycosphingolipid biosynthesis - ganglio series](#)
- [Metabolic pathways](#)

Disease

- [Paraplegia](#)