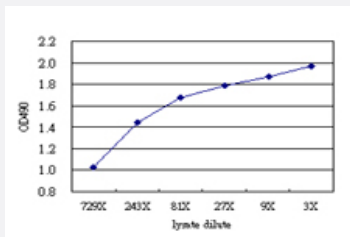


# ZBED1 (Human) Matched Antibody Pair

Catalog # H00009189-AP51

Size 1 Set

## Applications



Sandwich ELISA detection sensitivity ranging from approximately 729x to 3x dilution of the ZBED1 293T overexpression lysate (non-denatured).

## Specification

### Product Description

This antibody pair set comes with a matched antibody pair to detect and quantify the protein level of human ZBED1.

### Reactivity

Human

### Quality Control Testing

Standard curve using ZBED1 293T overexpression lysate (non-denatured) as an analyte. Sandwich ELISA detection sensitivity ranging from approximately 729x to 3x dilution of the ZBED1 293T overexpression lysate (non-denatured).

### Supplied Product

Antibody pair set content:  
 1. Capture antibody: mouse monoclonal anti-ZBED1 (100 ug)  
 2. Detection antibody: rabbit purified polyclonal anti-ZBED1 (50 ug)  
 \*Reagents are sufficient for at least 3-5 x 96 well plates using recommended protocols.

### Storage Instruction

Store reagents of the antibody pair set at -20°C or lower. Please aliquot to avoid repeated freeze thaw cycle. Reagents should be returned to -20°C storage immediately after use.

## Applications

- ELISA Pair (Transfected lysate)

[Protocol Download](#)

## Gene Info — ZBED1

Entrez GeneID	<a href="#">9189</a>
Gene Name	ZBED1
Gene Alias	ALTE, DREF, KIAA0785, TRAMP, hDREF
Gene Description	zinc finger, BED-type containing 1
Omim ID	<a href="#">300178</a>
Gene Ontology	<a href="#">Hyperlink</a>
Gene Summary	O
Other Designations	Ac-like transposable element DNA replication-related element binding factor OTTHUMP00000022839 OTTHUMP00000070388 putative Ac-like transposon zinc finger, BED domain containing 1