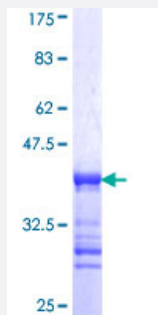


REPS2 (Human) Recombinant Protein (Q01)

Catalog # H00009185-Q01

Size 25 ug, 10 ug

Applications



Specification

| | |
|--------------------------------------|--|
| Product Description | Human REPS2 partial ORF (NP_004717, 66 a.a. - 165 a.a.) recombinant protein with GST-tag at N-terminal. |
| Sequence | RVPLSHGYSKLRSSAEQMHPAPYEARQPLVQPEGSSSGGPGTKPLRHQASLRSFSVERELQDN SSYPDEPWRITEEQREYYVNQFRSLQDPDSSFISGS |
| Host | Wheat Germ (in vitro) |
| Theoretical MW (kDa) | 36.74 |
| Interspecies Antigen Sequence | Mouse (85) |
| Preparation Method | in vitro wheat germ expression system |
| Purification | Glutathione Sepharose 4 Fast Flow |
| Quality Control Testing | 12.5% SDS-PAGE Stained with Coomassie Blue. |
| Storage Buffer | 50 mM Tris-HCl, 10 mM reduced Glutathione, pH=8.0 in the elution buffer. |
| Storage Instruction | Store at -80°C. Aliquot to avoid repeated freezing and thawing. |
| Note | Best use within three months from the date of receipt of this protein. |

Applications

- Enzyme-linked Immunoabsorbent Assay
- Western Blot (Recombinant protein)
- Antibody Production
- Protein Array

Gene Info — REPS2

Entrez GeneID [9185](#)

GeneBank Accession# [NM_004726](#)

Protein Accession# [NP_004717](#)

Gene Name REPS2

Gene Alias POB1

Gene Description RALBP1 associated Eps domain containing 2

Omim ID [300317](#)

Gene Ontology [Hyperlink](#)

Gene Summary The product of this gene is part of a protein complex that regulates the endocytosis of growth factors or receptors. The encoded protein directly interacts with a GTPase activating protein that functions downstream of the small G protein Ral. Its expression can negatively affect receptor internalization and inhibit growth factor signaling. Multiple transcript variants encoding different isoforms have been found for this gene. [provided by RefSeq]

Other Designations OTTHUMP00000022995|RALBP1-interacting protein 2|partner of Ral-binding protein 1