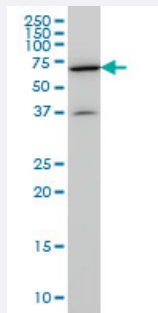


REPS2 monoclonal antibody (M01A), clone 4C2

Catalog # H00009185-M01A

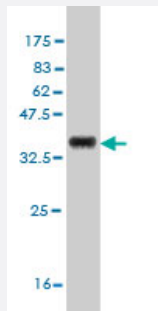
Size 200 uL

Applications



Western Blot (Cell lysate)

REPS2 monoclonal antibody (M01A), clone 4C2 Western Blot analysis of REPS2 expression in NIH/3T3 (Cat # L018V1).



Western Blot detection against Immunogen (36.74 KDa) .

Specification

Product Description	Mouse monoclonal antibody raised against a partial recombinant REPS2.
Immunogen	REPS2 (NP_004717, 66 a.a. ~ 165 a.a) partial recombinant protein with GST tag. MW of the GST tag alone is 26 KDa.
Sequence	RVPLSHGYSKLRSSAEQMHAPYEARQPLVQPEGSSSGGPGTKPLRHQASLIRSFVSVERELQDN SSYPDEPWRITEEQREYYVNQFRSLQPDPSFISGS
Host	Mouse
Reactivity	Human, Mouse

Interspecies Antigen Sequence	Mouse (85)
Isotype	IgM Kappa
Quality Control Testing	Antibody Reactive Against Recombinant Protein. Western Blot detection against Immunogen (36.74 KDa) .
Storage Buffer	In ascites fluid
Storage Instruction	Store at -20°C or lower. Aliquot to avoid repeated freezing and thawing.

Applications

- Western Blot (Cell lysate)

REPS2 monoclonal antibody (M01A), clone 4C2 Western Blot analysis of REPS2 expression in NIH/3T3 (Cat # L018V1).

[Protocol Download](#)

- Western Blot (Recombinant protein)

[Protocol Download](#)

- ELISA

Gene Info — REPS2

Entrez GeneID	9185
GeneBank Accession#	NM_004726
Protein Accession#	NP_004717
Gene Name	REPS2
Gene Alias	POB1
Gene Description	RALBP1 associated Eps domain containing 2
Omim ID	300317
Gene Ontology	Hyperlink

Gene Summary

The product of this gene is part of a protein complex that regulates the endocytosis of growth factors or receptors. The encoded protein directly interacts with a GTPase activating protein that functions downstream of the small G protein Ral. Its expression can negatively affect receptor internalization and inhibit growth factor signaling. Multiple transcript variants encoding different isoforms have been found for this gene. [provided by RefSeq]

Other Designations

OTTHUMP00000022995|RALBP1-interacting protein 2|partner of Ral-binding protein 1