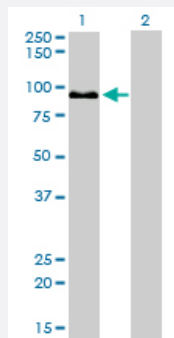


ZW10 monoclonal antibody (M05), clone 2E5

Catalog # H00009183-M05

Size 100 ug

Applications

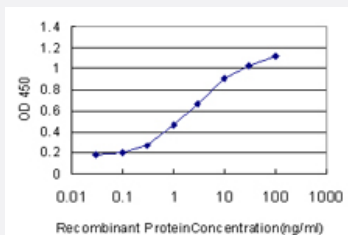


Western Blot (Transfected lysate)

Western Blot analysis of ZW10 expression in transfected 293T cell line by ZW10 monoclonal antibody (M05), clone 2E5.

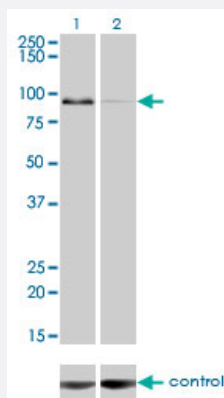
Lane 1: ZW10 transfected lysate (88.8 kDa).

Lane 2: Non-transfected lysate.



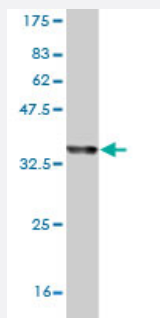
Sandwich ELISA (Recombinant protein)

Detection limit for recombinant GST tagged ZW10 is approximately 0.1 ng/ml as a capture antibody.



RNAi Knockdown (Antibody validated)

Western blot analysis of ZW10 over-expressed 293 cell line, cotransfected with ZW10 Validated Chimera RNAi (Cat # H00009183-R01V) (Lane 2) or non-transfected control (Lane 1). Blot probed with ZW10 monoclonal antibody (M05), clone 2E5 (Cat # H00009183-M05). GAPDH (36.1 kDa) used as specificity and loading control.



Western Blot detection against Immunogen (36.63 KDa) .

Specification

Product Description	Mouse monoclonal antibody raised against a partial recombinant ZW10.
Immunogen	ZW10 (NP_004715, 1 a.a. ~ 100 a.a) partial recombinant protein with GST tag. MW of the GST tag alone is 26 KDa.
Sequence	masfvtvla hsgrlekedl gtrslrr veeikgevcn miskkysefl psmqsaggli tqvdklsedi dllksriese vrrdlhvstg eftd lkqqle
Host	Mouse
Reactivity	Human
Interspecies Antigen Sequence	Mouse (86); Rat (85)
Isotype	IgG2a Kappa
Quality Control Testing	Antibody Reactive Against Recombinant Protein. Western Blot detection against Immunogen (36.63 KDa) .
Storage Buffer	In 1x PBS, pH 7.4
Storage Instruction	Store at -20°C or lower. Aliquot to avoid repeated freezing and thawing.

Applications

● Western Blot (Transfected lysate)

Western Blot analysis of ZW10 expression in transfected 293T cell line by ZW10 monoclonal antibody (M05), clone 2E5.

Lane 1: ZW10 transfected lysate(88.8 KDa).

Lane 2: Non-transfected lysate.

[Protocol Download](#)

- Western Blot (Recombinant protein)

[Protocol Download](#)

- Sandwich ELISA (Recombinant protein)

Detection limit for recombinant GST tagged ZW10 is approximately 0.1ng/ml as a capture antibody.

[Protocol Download](#)

- ELISA

- RNAi Knockdown (Antibody validated)

Western blot analysis of ZW10 over-expressed 293 cell line, cotransfected with ZW10 Validated Chimera RNAi (Cat # H00009183-R01V) (Lane 2) or non-transfected control (Lane 1). Blot probed with ZW10 monoclonal antibody (M05), clone 2E5 (Cat # H00009183-M05). GAPDH (36.1 kDa) used as specificity and loading control.

[Protocol Download](#)

Gene Info — ZW10

Entrez GeneID [9183](#)

GeneBank Accession# [NM_004724](#)

Protein Accession# [NP_004715](#)

Gene Name ZW10

Gene Alias HZW10, KNTC1AP, MGC149821

Gene Description ZW10, kinetochore associated, homolog (Drosophila)

Omim ID [603954](#)

Gene Ontology [Hyperlink](#)

Gene Summary This gene encodes a protein that is one of many involved in mechanisms to ensure proper chromosome segregation during cell division. The encoded protein binds to centromeres during the pro phase, metaphase, and early anaphase cell division stages and to kinetochore microtubules during metaphase. [provided by RefSeq]

Other Designations ZW10 homolog, centromere/kinetochore protein|centromere/kinetochore protein zw10|zeste white 10 homolog