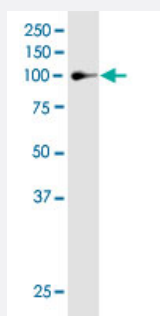


# MAP3K13 monoclonal antibody (M04), clone 4H7

Catalog # H00009175-M04

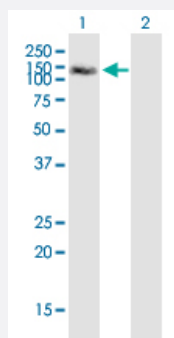
Size 100 ug

## Applications



### Western Blot (Cell lysate)

MAP3K13 monoclonal antibody (M04), clone 4H7. Western Blot analysis of MAP3K13 expression in Jurkat.

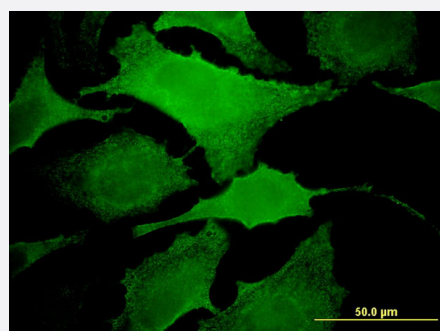


### Western Blot (Transfected lysate)

Western Blot analysis of MAP3K13 expression in transfected 293T cell line by MAP3K13 monoclonal antibody (M04), clone 4H7.

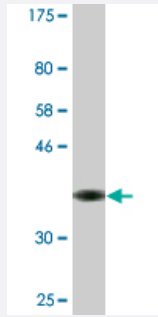
Lane 1: MAP3K13 transfected lysate (Predicted MW: 108.3 KDa).

Lane 2: Non-transfected lysate.



### Immunofluorescence

Immunofluorescence of monoclonal antibody to MAP3K13 on HeLa cell .  
[antibody concentration 10 ug/ml]



Western Blot detection against Immunogen (36.63 KDa) .

## Specification

<b>Product Description</b>	Mouse monoclonal antibody raised against a partial recombinant MAP3K13.
<b>Immunogen</b>	MAP3K13 (NP_004712.1, 711 a.a. ~ 810 a.a) partial recombinant protein with GST tag. MW of the GST tag alone is 26 KDa.
<b>Sequence</b>	SEPDKGQAGPWGCCQADAYDPCLQCRPEQYGSLDIPSAEPVGRSPDLKSPAHNPLENAQS SEKTEENEFSGCRSESSLGTSHLGTTPPALPRKTRPLQK
<b>Host</b>	Mouse
<b>Reactivity</b>	Human
<b>Interspecies Antigen Sequence</b>	Mouse (89); Rat (87)
<b>Isotype</b>	IgG2a Kappa
<b>Quality Control Testing</b>	Antibody Reactive Against Recombinant Protein. Western Blot detection against Immunogen (36.63 KDa) .
<b>Storage Buffer</b>	In 1x PBS, pH 7.4
<b>Storage Instruction</b>	Store at -20°C or lower. Aliquot to avoid repeated freezing and thawing.

## Applications

- Western Blot (Cell lysate)

MAP3K13 monoclonal antibody (M04), clone 4H7. Western Blot analysis of MAP3K13 expression in Jurkat.

[Protocol Download](#)

- Western Blot (Transfected lysate)

Western Blot analysis of MAP3K13 expression in transfected 293T cell line by MAP3K13 monoclonal antibody (M04), clone 4H7.

Lane 1: MAP3K13 transfected lysate (Predicted MW: 108.3 KDa).

Lane 2: Non-transfected lysate.

[Protocol Download](#)

- Western Blot (Recombinant protein)

[Protocol Download](#)

- ELISA

- Immunofluorescence

Immunofluorescence of monoclonal antibody to MAP3K13 on HeLa cell . [antibody concentration 10 ug/ml]

## Gene Info — MAP3K13

Entrez GeneID [9175](#)

GeneBank Accession# [NM\\_004721](#)

Protein Accession# [NP\\_004712.1](#)

Gene Name MAP3K13

Gene Alias LZK, MGC133196

Gene Description mitogen-activated protein kinase kinase kinase 13

Omim ID [604915](#)

Gene Ontology [Hyperlink](#)

**Gene Summary** The protein encoded by this gene is a member of serine/threonine protein kinase family. This kinase contains a dual leucine-zipper motif, and has been shown to form dimers/oligomers through its leucine-zipper motif. This kinase can phosphorylate and activate MAPK8/JNK, MAP2K7/MKK7, which suggests a role in the JNK signaling pathway. [provided by RefSeq]

**Other Designations** leucine zipper-bearing kinase

## Pathway

- [MAPK signaling pathway](#)

## Disease

- [Tobacco Use Disorder](#)