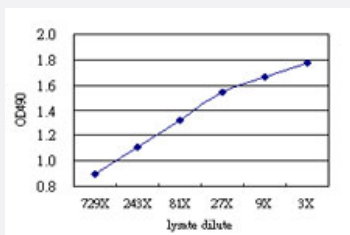


# MAP3K13 (Human) Matched Antibody Pair

Catalog # H00009175-AP51

Size 1 Set

## Applications



Sandwich ELISA detection sensitivity ranging from approximately 729x to 3x dilution of the MAP3K13 293T overexpression lysate (non-denatured).

## Specification

### Product Description

This antibody pair set comes with a matched antibody pair to detect and quantify the protein level of human MAP3K13.

### Reactivity

Human

### Interspecies Antigen Sequence

Mouse (89); Rat (87)

### Quality Control Testing

Standard curve using MAP3K13 293T overexpression lysate (non-denatured) as an analyte. Sandwich ELISA detection sensitivity ranging from approximately 729x to 3x dilution of the MAP3K13 293T overexpression lysate (non-denatured).

### Supplied Product

Antibody pair set content:  
 1. Capture antibody: mouse monoclonal anti-MAP3K13 (100 ug)  
 2. Detection antibody: rabbit purified polyclonal anti-MAP3K13 (50 ug)  
 \*Reagents are sufficient for at least 3-5 x 96 well plates using recommended protocols.

### Storage Instruction

Store reagents of the antibody pair set at -20°C or lower. Please aliquot to avoid repeated freeze thaw cycle. Reagents should be returned to -20°C storage immediately after use.

## Applications

- ELISA Pair (Transfected lysate)

[Protocol Download](#)

## Gene Info — MAP3K13

**Entrez GeneID** [9175](#)

**Gene Name** MAP3K13

**Gene Alias** LZK, MGC133196

**Gene Description** mitogen-activated protein kinase kinase kinase 13

**Omim ID** [604915](#)

**Gene Ontology** [Hyperlink](#)

**Gene Summary** The protein encoded by this gene is a member of serine/threonine protein kinase family. This kinase contains a dual leucine-zipper motif, and has been shown to form dimers/oligomers through its leucine-zipper motif. This kinase can phosphorylate and activate MAPK8/JNK, MAP2K7/MKK7, which suggests a role in the JNK signaling pathway. [provided by RefSeq]

**Other Designations** leucine zipper-bearing kinase

## Pathway

- [MAPK signaling pathway](#)

## Disease

- [Tobacco Use Disorder](#)