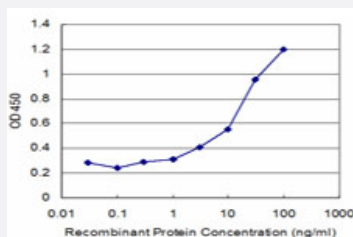


TMSB10 monoclonal antibody (M02), clone 2E3

Catalog # H00009168-M02

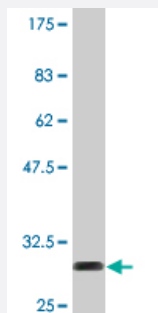
Size 100 ug

Applications



Sandwich ELISA (Recombinant protein)

Detection limit for recombinant GST tagged TMSB10 is approximately 0.3ng/ml as a capture antibody.



Western Blot detection against Immunogen (30.58 KDa) .

Specification

Product Description	Mouse monoclonal antibody raised against a full-length recombinant TMSB10.
Immunogen	TMSB10 (AAH16025, 1 a.a. ~ 44 a.a) full-length recombinant protein with GST tag. MW of the GST tag alone is 26 KDa.
Sequence	MADKPDMGEIASFDKAKLKKTETQEKNLPTKETIEQEKRSIS
Host	Mouse
Reactivity	Human
Isotype	IgG2a Kappa

Quality Control Testing

Antibody Reactive Against Recombinant Protein.
Western Blot detection against Immunogen (30.58 KDa) .

Storage Buffer

In 1x PBS, pH 7.4

Storage Instruction

Store at -20°C or lower. Aliquot to avoid repeated freezing and thawing.

Applications

- Western Blot (Recombinant protein)

[Protocol Download](#)

- Sandwich ELISA (Recombinant protein)

Detection limit for recombinant GST tagged TMSB10 is approximately 0.3ng/ml as a capture antibody.

[Protocol Download](#)

- ELISA

Gene Info — TMSB10

Entrez GeneID

[9168](#)

GeneBank Accession#

[BC016025](#)

Protein Accession#

[AAH16025](#)

Gene Name

TMSB10

Gene Alias

MIG12, TB10

Gene Description

thymosin beta 10

Omim ID

[188399](#)

Gene Ontology

[Hyperlink](#)

Gene Summary

beta 10

Other Designations

migration-inducing gene 12|migration-inducing protein 12|thymosin, beta 10