

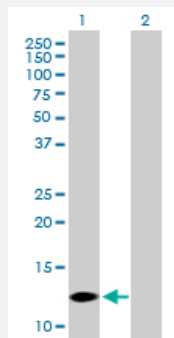
MaxPab®

# COX7A2L purified MaxPab mouse polyclonal antibody (B01P)

Catalog # H00009167-B01P

Size 50 ug

## Applications



### Western Blot (Transfected lysate)

Western Blot analysis of COX7A2L expression in transfected 293T cell line ([H00009167-T01](#)) by COX7A2L MaxPab polyclonal antibody.

Lane 1: COX7A2L transfected lysate(12.54 KDa).

Lane 2: Non-transfected lysate.

## Specification

Product Description	Mouse polyclonal antibody raised against a full-length human COX7A2L protein.
Immunogen	COX7A2L (AAH05251, 1 a.a. ~ 114 a.a) full-length human protein.
Sequence	MYKFSGFTQKLAGAWASEAYSPQGLKPVVSTEAPPIIFATPTKLTSDSTVYDYAGKNKVPELQKF FQKADGVPVYLKRGLPDQMLYRTTMALTVGGTYCLIALYMASQPKNK
Host	Mouse
Reactivity	Human
Quality Control Testing	Antibody reactive against mammalian transfected lysate.
Storage Buffer	In 1x PBS, pH 7.4
Storage Instruction	Store at -20°C or lower. Aliquot to avoid repeated freezing and thawing.

## Applications

- Western Blot (Transfected lysate)

Western Blot analysis of COX7A2L expression in transfected 293T cell line ([H00009167-T01](#)) by COX7A2L MaxPab polyclonal antibody.

Lane 1: COX7A2L transfected lysate(12.54 KDa).

Lane 2: Non-transfected lysate.

[Protocol Download](#)

## Gene Info — COX7A2L

Entrez GeneID [9167](#)

GeneBank Accession# [BC005251](#)

Protein Accession# [AAH05251](#)

Gene Name COX7A2L

Gene Alias COX7AR, COX7RP, EB1, SIG81

Gene Description cytochrome c oxidase subunit VIIa polypeptide 2 like

Omim ID [605771](#)

Gene Ontology [Hyperlink](#)

**Gene Summary** Cytochrome c oxidase (COX), the terminal component of the mitochondrial respiratory chain, catalyzes the electron transfer from reduced cytochrome c to oxygen. This component is a heteromeric complex consisting of 3 catalytic subunits encoded by mitochondrial genes and multiple structural subunits encoded by nuclear genes. The mitochondrially-encoded subunits function in electron transfer, and the nuclear-encoded subunits may function in the regulation and assembly of the complex. This nuclear gene encodes a protein similar to polypeptides 1 and 2 of subunit VIIa in the C-terminal region, and also highly similar to the mouse Sig81 protein sequence. This gene is expressed in all tissues, and upregulated in a breast cancer cell line after estrogen treatment. It is possible that this gene represents a regulatory subunit of COX and mediates the higher level of energy production in target cells by estrogen. [provided by RefSeq]

**Other Designations** OTTHUMP00000158765|cytochrome c oxidase subunit VII-related protein|estrogen receptor binding CpG island

## Pathway

- [Cardiac muscle contraction](#)
- [Oxidative phosphorylation](#)

## Disease

- [Genetic Predisposition to Disease](#)
- [Prostatic Neoplasms](#)